

HER2 Rabbit mAb (AR1338)

Key Features

Host Species:	Rabbit
Reactivity:	Human, Mouse, Rat
Applications:	WB, IHC, IF, IP, ELISA
Isotype:	IgG, Kappa
MW:	138kD (Calculated) 185kD (Observed)

Recommended Dilution Ratios

IHC:	1:200-1000
WB:	1:2000-10000
IF:	1:200-1000
ELISA:	1:5000-20000
IP:	1:50-200

Storage

-15°C to -25°C/1 year (Do not lower than -25°C)

Basic Information

Clonality	Monoclonal
-----------	------------

Immunogen Information

Specificity	Endogenous
-------------	------------

Target Information

Gene name	ERBB2 HER2 MLN19 NEU NGL
Protein Name	Her-2

Organism	Gene ID	UniProt ID
Human	2064	P04626
Mouse	13866	P70424
Rat		P06494

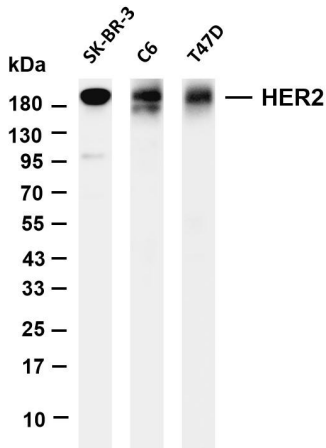
Cellular Localization	[Isoform 1]: Cell membrane; Single-pass type I membrane protein. Early endosome. Cytoplasm, perinuclear region. Nucleus. Translocation to the nucleus requires endocytosis, probably endosomal sorting and is mediated by importin beta-1/KPNB1.
-----------------------	--

Also detected in VPS35-positive endosome-to-TGN retrograde vesicles (PubMed:31138794); [Isoform 2]: Cytoplasm. Nucleus; [Isoform 3]: Cytoplasm. Nucleus.

Expressed in a variety of tumor tissues including primary breast tumors and tumors from small bowel, esophagus, kidney and mouth.

Tissue specificity

Validation Data



Various whole cell lysates were separated by 4-20% SDS-PAGE, and the membrane was blotted with anti-HER2 antibody. The HRP-conjugated Goat anti-Rabbit IgG(H + L) antibody was used to detect the antibody.

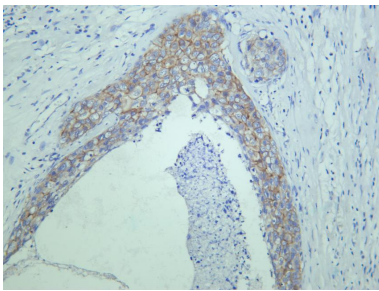
Lane 1: SKBR-3

Lane 2: C6

Lane 3: T47D

Predicted band size: 138kDa

Observed band size: 185kDa



Human breast carcinoma was stained with anti-HER2 rabbit antibody

For Research Use Only