

Rab7 Rabbit mAb (AR1183)

Key Features

Host Species:	Rabbit
Reactivity:	Human, Mouse, Rat
Applications:	WB, IHC, IF, IP, ELISA
Isotype:	IgG, Kappa
MW:	23kD (Calculated) 23kD (Observed)

Recommended Dilution Ratios

IHC:	1:200-1000
WB:	1:1000-5000
IF:	1:200-1000
ELISA:	1:5000-20000
IP:	1:50-200

Storage

-15°C to -25°C/1 year (Do not lower than -25°C)

Basic Information

Clonality	Monoclonal
-----------	------------

Immunogen Information

Specificity	Endogenous
-------------	------------

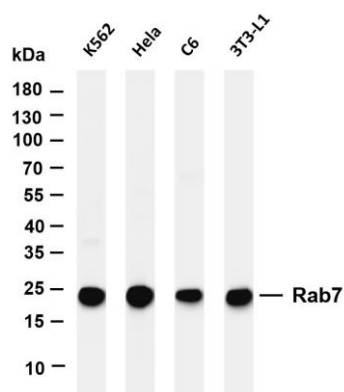
Target Information

Gene name	RAB7A RAB7
Protein Name	RAB7A

Organism	Gene ID	UniProt ID
Human	7879	P51149
Mouse	19349	P51150
Rat	29448	P09527

Cellular Localization	Cytoplasm
Tissue specificity	Widely expressed; high expression found in skeletal muscle.

Validation Data



Various whole cell lysates were separated by 4-20% SDS-PAGE, and the membrane was blotted with anti-Rab7 antibody. The HRP-conjugated Goat anti-Rabbit IgG(H + L) antibody was used to detect the antibody.

Lane 1: K562

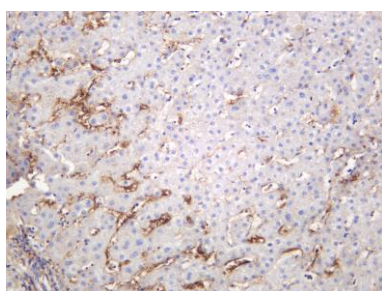
Lane 2: HeLa

Lane 3: C6

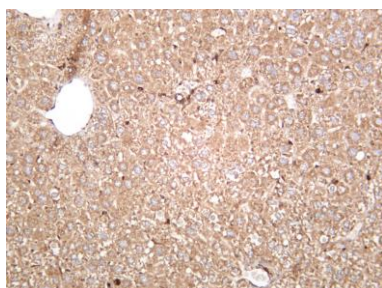
Lane 4: 3T3-L1

Predicted band size: 23kDa

Observed band size: 23kDa



Human liver was stained with anti-Rab7 rabbit antibody



Mouse liver was stained with anti-Rab7 rabbit antibody

For Research Use Only