

MEK3 Rabbit mAb (AR1349)

Key Features

Host Species:	Rabbit
Reactivity:	Human, Mouse, Rat
Applications:	WB, IHC, IF, IP, ELISA
Isotype:	IgG, Kappa
MW:	39kD (Calculated) 39kD (Observed)

Recommended Dilution Ratios

IHC:	1:200-1000
WB:	1:2000-10000
IF:	1:200-1000
ELISA:	1:5000-20000
IP:	1:50-200

Storage

-15°C to -25°C/1 year (Do not lower than -25°C)

Basic Information

Clonality	Monoclonal
-----------	------------

Immunogen Information

Specificity	Endogenous
-------------	------------

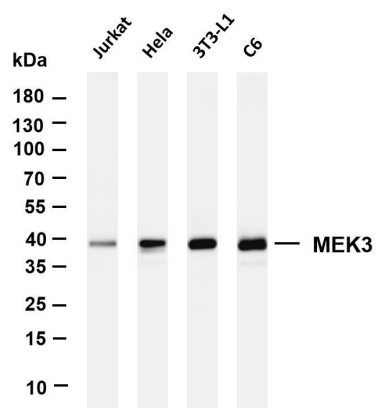
Target Information

Gene name	MAP2K3
Protein Name	Dual specificity mitogen-activated protein kinase 3

Organism	Gene ID	UniProt ID
Human	5606	P46734
Mouse	26397	O09110

Cellular Localization	Cytoplasm, Nucleus
Tissue specificity	Abundant expression is seen in the skeletal muscle. It is also widely expressed in other tissues.

Validation Data



Various whole cell lysates were separated by 4-20% SDS-PAGE, and the membrane was blotted with anti-MEK3 antibody. The HRP conjugated Goat anti-Rabbit IgG(H + L) antibody was used to detect the antibody.

Lane 1: Jurkat

Lane 2: HeLa

Lane 3: 3T3-L1

Lane 4: C6

Predicted band size: 39kDa

Observed band size: 39kDa

For Research Use Only