

MOB1 Rabbit mAb (AR1352)

Key Features

Host Species:	Rabbit
Reactivity:	Human, Mouse, Rat
Applications:	WB, IF, IP, ELISA
Isotype:	IgG, Kappa
MW:	24kD (Calculated) 24kD (Observed)

Recommended Dilution Ratios

WB:	1:2000-10000
IF:	1:200-1000
ELISA:	1:5000-20000
IP:	1:50-200

Storage

-15°C to -25°C/1 year (Do not lower than -25°C)

Basic Information

Clonality	Monoclonal
-----------	------------

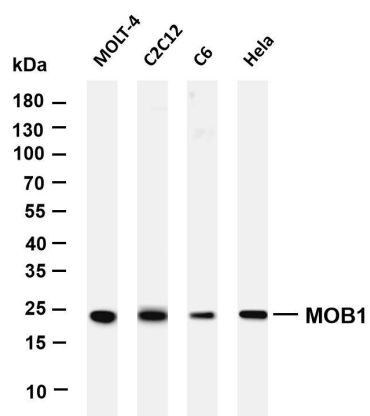
Immunogen Information

Specificity	Endogenous
-------------	------------

Target Information

Protein Name	MOB1 (Thr12)		
	Organism	Gene ID	UniProt ID
	Human	55233	Q9H8S9
	Mouse	232157	Q921Y0
	Rat	297387	Q3T1J9
Cellular Localization	Cytoplasm, Nucleus		
Tissue specificity	Adrenal gland, bone marrow, brain, placenta, prostate, salivary gland, skeletal muscle, testis, thymus, thyroid gland, heart, spinal cord, fetal brain and fetal liver.		

Validation Data



Various whole cell lysates were separated by 4-20% SDS-PAGE, and the membrane was blotted with anti-MOB1 antibody. The HRP-conjugated Goat anti-Rabbit IgG(H + L) antibody was used to detect the antibody.

Lane 1: MOLT-4

Lane 2: C2C12

Lane 3: C6

Lane 4: HeLa

Predicted band size: 24kDa

Observed band size: 24kDa

For Research Use Only