

mtTFA Rabbit mAb (AR1353)

Key Features

Host Species:	Rabbit
Reactivity:	Human, Mouse, Rat
Applications:	WB, IHC, IF, IP, ELISA
Isotype:	IgG, Kappa
MW:	29kD (Calculated) 20kD (Observed)

Recommended Dilution Ratios

IHC:	1:200-1000
WB:	1:2000-10000
IF:	1:200-1000
ELISA:	1:5000-20000
IP:	1:50-200

Storage

-15°C to -25°C/1 year (Do not lower than -25°C)

Basic Information

Clonality	Monoclonal
-----------	------------

Immunogen Information

Specificity	Endogenous
-------------	------------

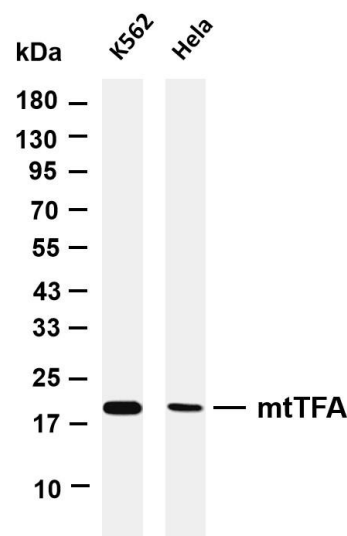
Target Information

Gene name	TFAM
Protein Name	Transcription factor A mitochondrial

Organism	Gene ID	UniProt ID
Human	7019	Q00059
Mouse		P40630

Cellular Localization	Mitochondrion
Tissue specificity	Lymphocyte, Pooled, Uterus

Validation Data



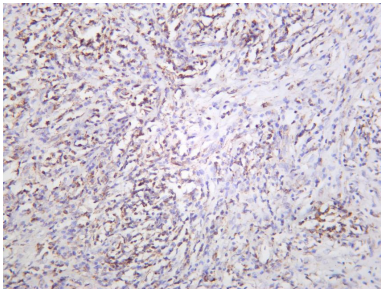
Various whole cell lysates were separated by 4-20% SDS-PAGE, and the membrane was blotted with anti-mtTFA antibody. The HRP-conjugated Goat anti-Rabbit IgG(H + L) antibody was used to detect the antibody.

Lane 1: K562

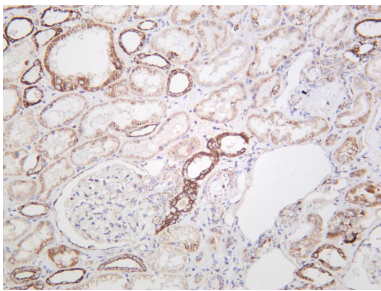
Lane 2: HeLa

Predicted band size: 29kDa

Observed band size: 20kDa



Human thyroid carcinoma was stained with anti-mtTFA rabbit antibody



Human kidney was stained with anti-mtTFA rabbit antibody

For Research Use Only