

Mitofusin-2 Rabbit mAb (AR1351)

Key Features

Host Species:	Rabbit
Reactivity:	Human,Mouse,Rat
Applications:	WB,IHC,IF,IP,ELISA
Isotype:	IgG,Kappa
MW:	86kD (Calculated) 86kD (Observed)

Recommended Dilution Ratios

IHC:	1:200-1000
WB:	1:2000-10000
IF:	1:200-1000
ELISA:	1:5000-20000
IP:	1:50-200

Storage

-15°C to -25°C/1 year (Do not lower than -25°C)

Basic Information

Clonality	Monoclonal
-----------	------------

Immunogen Information

Specificity	Endogenous
-------------	------------

Target Information

Gene name	MFN2
-----------	------

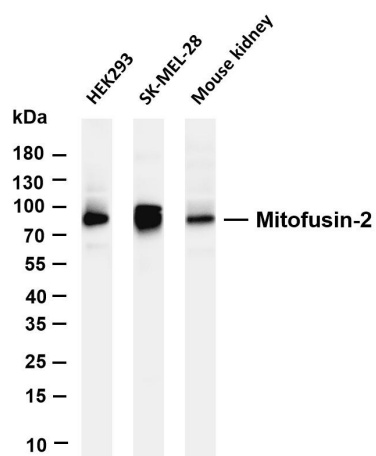
Protein Name	Mitofusin-2
--------------	-------------

Organism	Gene ID	UniProt ID
Human	9927	O95140
Mouse	170731	Q80U63
Rat		Q8R500

Cellular Localization	Mitochondrion outer membrane
-----------------------	------------------------------

Tissue specificity	Ubiquitous; expressed at low level. Highly expressed in heart and kidney.
--------------------	---

Validation Data



Various whole cell lysates were separated by 4-20% SDS-PAGE, and the membrane was blotted with anti-Mitofusin-2 antibody.

The HRP-conjugated Goat anti-Rabbit IgG(H + L) antibody was used to detect the antibody.

Lane 1: HEK293

Lane 2: SK-MEL-28

Lane 3: Mouse kidney

Predicted band size: 86kDa

Observed band size: 86kDa

For Research Use Only