

NDUFB8 Rabbit mAb (AR1356)

Key Features

Host Species:	Rabbit
Reactivity:	Human, Mouse, Rat
Applications:	WB, IHC, IF, IP, ELISA
Isotype:	IgG, Kappa
MW:	22kD (Calculated) 22kD (Observed)

Recommended Dilution Ratios

IHC:	1:200-1000
WB:	1:1000-5000
IF:	1:200-1000
ELISA:	1:5000-20000
IP:	1:50-200

Storage

-15°C to -25°C/1 year (Do not lower than -25°C)

Basic Information

Clonality	Monoclonal
-----------	------------

Immunogen Information

Specificity	Endogenous
-------------	------------

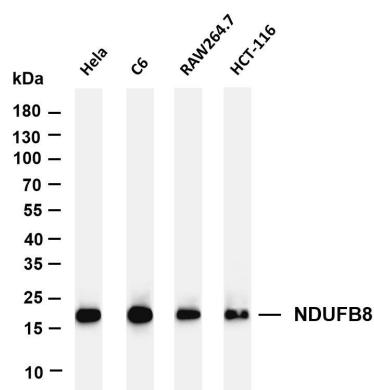
Target Information

Gene name	NDUFB8
Protein Name	NADH dehydrogenase [ubiquinone] 1 beta subcomplex subunit 8, mitochondrial (Complex IASHI) (CI-ASHI) (NADH-ubiquinone oxidoreductase ASHI subunit)

Organism	Gene ID	UniProt ID
Human	4714	O95169
Mouse		Q9D6J5

Cellular Localization	Mitochondrion inner membrane
Tissue specificity	Blood, Brain, Lung, Umbilical cord blood

Validation Data



Various whole cell lysates were separated by 4-20% SDS-PAGE, and the membrane was blotted with anti-NDUF8 antibody. The HRP-conjugated Goat anti-Rabbit IgG(H + L) antibody was used to detect the antibody.

Lane 1: HeLa

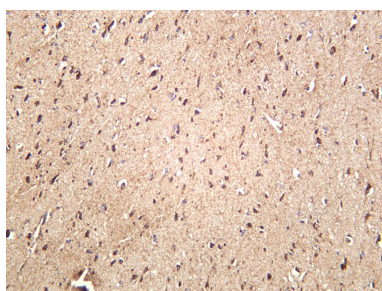
Lane 2: C6

Lane 3: RAW264.7

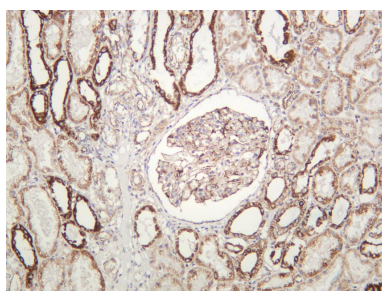
Lane 4: HCT-116

Predicted band size: 22kDa

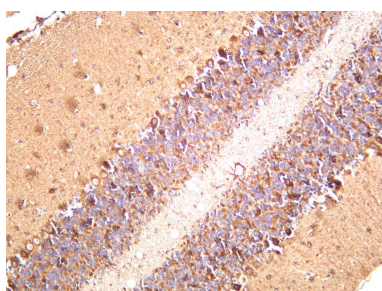
Observed band size: 22kDa



Human brain was stained with anti-NDUF8 rabbit antibody



Human kidney was stained with anti-NDUF8 rabbit antibody



Mouse brain was stained with anti-NDUF8 rabbit antibody

For Research Use Only