

Notch2 Rabbit mAb (AR1360)

Key Features

Host Species:	Rabbit
Reactivity:	Human, Mouse, Rat
Applications:	WB, IHC, IF, IP, ELISA
Isotype:	IgG, Kappa
MW:	265kD (Calculated) 120kD (Observed)

Recommended Dilution Ratios

IHC:	1:100-1000
WB:	1:1000-5000
IF:	1:200-1000
ELISA:	1:5000-20000
IP:	1:50-200

Storage

-15°C to -25°C/1 year (Do not lower than -25°C)

Basic Information

Clonality	Monoclonal
-----------	------------

Immunogen Information

Specificity	Endogenous
-------------	------------

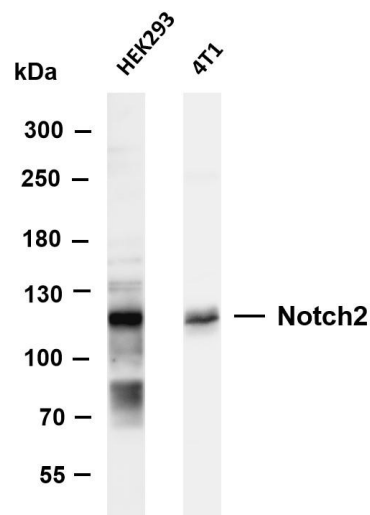
Target Information

Gene name	NOTCH2
Protein Name	Neurogenic locus notch homolog protein 2

Organism	Gene ID	UniProt ID
Human	4853	Q04721
Mouse	18129	O35516
Rat	29492	Q9QW30

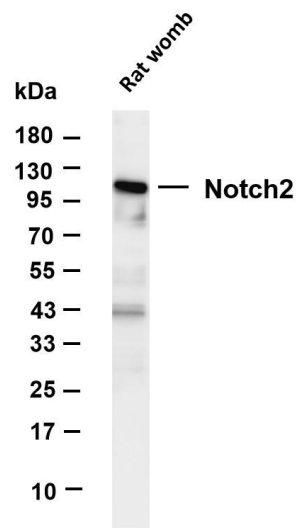
Cellular Localization	Cytoplasm, Membrane
Tissue specificity	Expressed in the brain, heart, kidney, lung, skeletal muscle and liver. Ubiquitously expressed in the embryo.

Validation Data



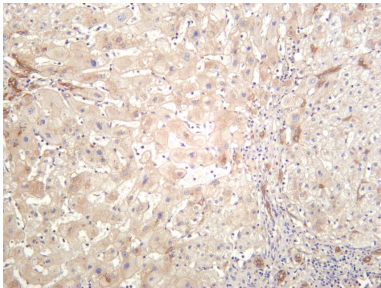
Various whole cell lysates were separated by 4-8% SDS-PAGE, and the membrane was blotted with anti-Notch2 antibody. The HRP-conjugated Goat anti-Rabbit IgG(H + L) antibody was used to detect the antibody.

Lane 1: HEK293
Lane 2: 4T1
Predicted band size: 265kDa
Observed band size: 120kDa

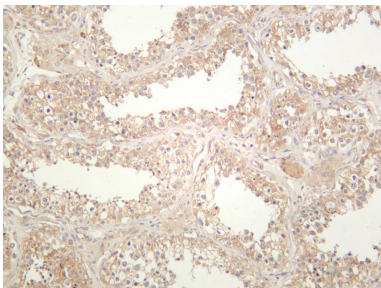


Various whole cell lysates were separated by 4-20% SDS-PAGE, and the membrane was blotted with anti-Notch2 antibody. The HRP-conjugated Goat anti-Rabbit IgG(H + L) antibody was used to detect the antibody.

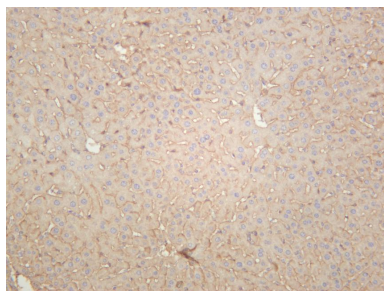
Lane 1: Rat womb
Predicted band size: 265kDa
Observed band size: 120kDa



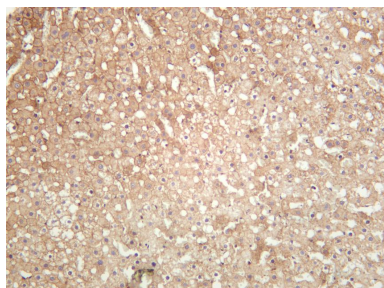
Human liver was stained with anti-Notch2 rabbit antibody



Human testis was stained with anti-Notch2 rabbit antibody



Mouse liver was stained with anti-Notch2 rabbit antibody



Rat liver was stained with anti-Notch2 rabbit antibody

For Research Use Only