

Perilipin-1 Rabbit mAb (AR1371)

Key Features

Host Species:	Rabbit
Reactivity:	Human, Mouse, Rat
Applications:	WB, IHC, IF, IP, ELISA
Isotype:	IgG, Kappa
MW:	56kD (Calculated) 56kD (Observed)

Recommended Dilution Ratios

IHC:	1:400-1000
WB:	1:2000-10000
IF:	1:200-1000
ELISA:	1:5000-20000
IP:	1:50-200

Storage

-15°C to -25°C/1 year (Do not lower than -25°C)

Basic Information

Clonality	Monoclonal
-----------	------------

Immunogen Information

Specificity	Endogenous
-------------	------------

Target Information

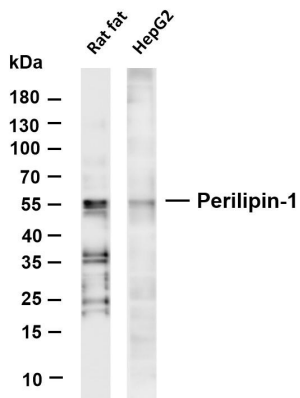
Gene name	PLIN1 PERI PLIN
Protein Name	Perilipin-1 (Lipid droplet-associated protein)

Organism	Gene ID	UniProt ID
Human	5346	O60240
Mouse	103968	Q8CGN5
Rat	25629	P43884

Cellular Localization	Endoplasmic reticulum
Tissue specificity	Detected in adipocytes from white adipose tissue (at protein level) (PubMed:27832861). Detected in visceral adipose tissue and mammary

gland (PubMed:9521880).

Validation Data



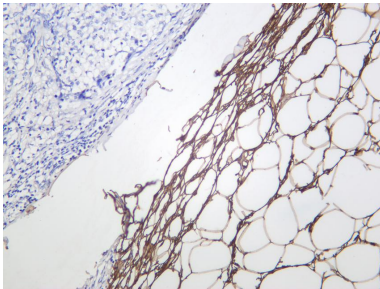
Various whole cell lysates were separated by 4-20% SDS-PAGE, and the membrane was blotted with anti-Perilipin-1 antibody. The HRP-conjugated Goat anti-Rabbit IgG(H + L) antibody was used to detect the antibody.

Lane 1: Rat fat

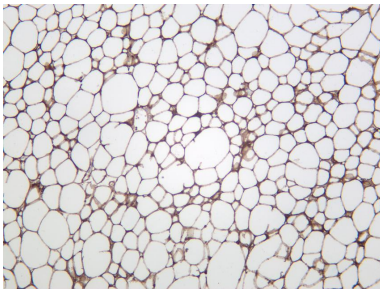
Lane 2: HepG2

Predicted band size: 56kDa

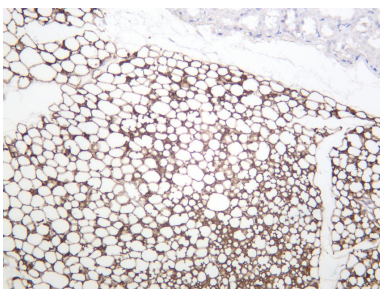
Observed band size: 56kDa



Human adipose was stained with anti-Perilipin-1 rabbit antibody



Mouse adipose was stained with anti-Perilipin-1 rabbit antibody



Rat adipose was stained with anti-Perilipin-1 rabbit antibody

For Research Use Only