

PSD95 Rabbit mAb (AR1375)

Key Features

Host Species:	Rabbit
Reactivity:	Human, Mouse, Rat
Applications:	WB, IHC, IF, IP, ELISA
Isotype:	IgG, Kappa
MW:	80kD (Calculated) 95kD (Observed)

Recommended Dilution Ratios

IHC:	1:500-2000
WB:	1:2000-10000
IF:	1:200-1000
ELISA:	1:5000-20000
IP:	1:50-200

Storage

-15°C to -25°C/1 year (Do not lower than -25°C)

Basic Information

Clonality	Monoclonal
-----------	------------

Immunogen Information

Specificity	Endogenous
-------------	------------

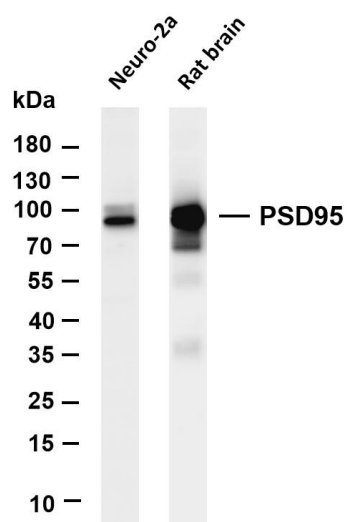
Target Information

Gene name	DLG4
Protein Name	Disks large homolog 4

Organism	Gene ID	UniProt ID
Human	1742	P78352
Mouse	13385	Q62108
Rat	29495	P31016

Cellular Localization	Cytoplasm, Membrane
Tissue specificity	Brain

Validation Data



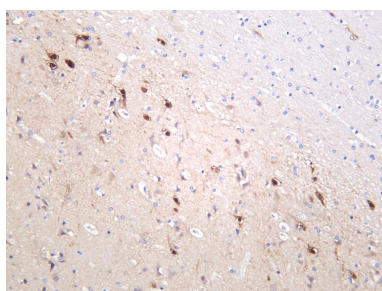
Various whole cell lysates were separated by 4-20% SDS-PAGE, and the membrane was blotted with anti-PSD95 antibody. The HRP-conjugated Goat anti-Rabbit IgG(H + L) antibody was used to detect the antibody.

Lane 1: Neuro-2a

Lane 2: Rat brain

Predicted band size: 80kDa

Observed band size: 95kDa



Human brain was stained with anti-PSD95 rabbit antibody

For Research Use Only