

## SDHB Rabbit mAb (AR1381)

### Key Features

Host Species:	Rabbit
Reactivity:	Human, Mouse, Rat
Applications:	WB, IHC, IF, IP, ELISA
Isotype:	IgG, Kappa
MW:	32kD (Calculated) 32kD (Observed)

### Recommended Dilution Ratios

IHC:	1:200-1000
WB:	1:2000-10000
IF:	1:200-1000
ELISA:	1:5000-20000
IP:	1:50-200

### Storage

-15°C to -25°C/1 year (Do not lower than -25°C)

### Basic Information

Clonality	Monoclonal
-----------	------------

### Immunogen Information

Specificity	Endogenous
-------------	------------

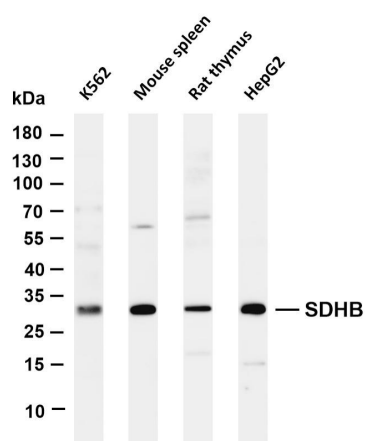
### Target Information

Gene name	SDHB
Protein Name	Succinate dehydrogenase [ubiquinone] iron-sulfur subunit mitochondrial

Organism	Gene ID	UniProt ID
Human	6390	P21912
Mouse	67680	Q9CQA3
Rat	298596	P21913

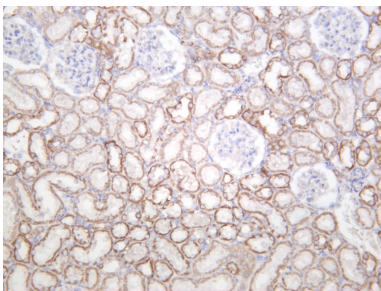
Cellular Localization	Mitochondrion inner membrane
Tissue specificity	Brain, Fibroblast, Liver

Validation Data

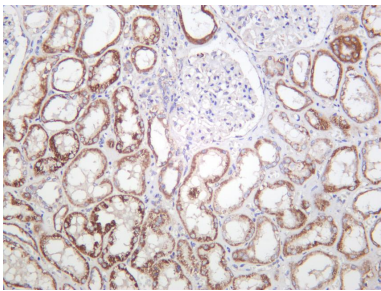


Various whole cell lysates were separated by 4-20% SDS-PAGE, and the membrane was blotted with anti-SDHB antibody. The HRP-conjugated Goat anti-Rabbit IgG(H + L) antibody was used to detect the antibody.

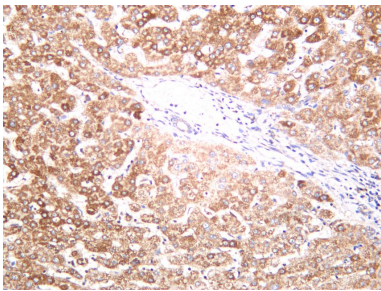
- Lane 1: K562
- Lane 2: Mouse spleen
- Lane 3: Rat thymus
- Lane 4: HepG2
- Predicted band size: 32kDa
- Observed band size: 32kDa



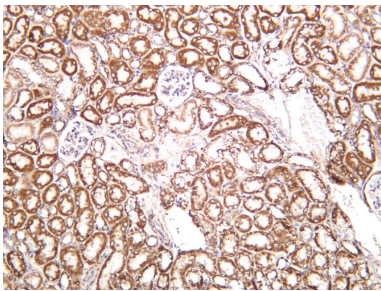
Rat kidney was stained with anti-SDHB rabbit antibody



Human kidney was stained with anti-SDHB rabbit antibody



Human liver was stained with anti-SDHB rabbit antibody



Mouse kidney was stained with anti-SDHB rabbit antibody