

SH-PTP2 Rabbit mAb (AR1382)

Key Features

Host Species:	Rabbit
Reactivity:	Human, Mouse, Rat
Applications:	WB, IHC, IF, IP, ELISA
Isotype:	IgG, Kappa
MW:	68kD (Calculated) 68kD (Observed)

Recommended Dilution Ratios

IHC:	1:2000-8000
WB:	1:2000-10000
IF:	1:200-1000
ELISA:	1:5000-20000
IP:	1:50-200

Storage

-15°C to -25°C/1 year (Do not lower than -25°C)

Basic Information

Clonality	Monoclonal
-----------	------------

Immunogen Information

Specificity	Endogenous
-------------	------------

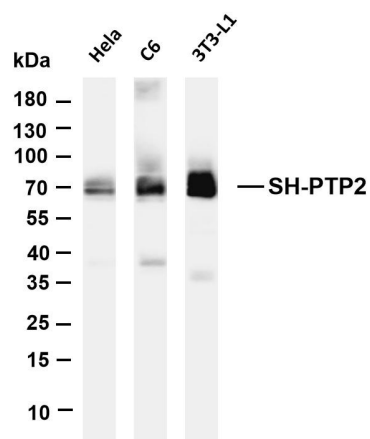
Target Information

Gene name	PTPN11
Protein Name	Tyrosine-protein phosphatase non-receptor type 11

Organism	Gene ID	UniProt ID
Human	5781	Q06124
Mouse	19247	P35235
Rat	25622	P41499

Cellular Localization	Cytoplasm, Nucleus
Tissue specificity	Widely expressed, with highest levels in heart, brain, and skeletal muscle.

Validation Data



Various whole cell lysates were separated by 4-20% SDS-PAGE, and the membrane was blotted with anti-SH-PTP2 antibody. The HRP-conjugated Goat anti-Rabbit IgG(H + L) antibody was used to detect the antibody.

Lane 1: HeLa

Lane 2: C6

Lane 3: 3T3-L1

Predicted band size: 68kDa

Observed band size: 68kDa

For Research Use Only