

Ly6g Rabbit mAb (AR1252)

Key Features

Host Species:	Rabbit
Reactivity:	Mouse
Applications:	WB,IHC,IF,IP,ELISA
Isotype:	IgG,Kappa
MW:	14kD (Calculated) 14kD (Observed)

Recommended Dilution Ratios

IHC:	1:1000-4000
WB:	1:1000-5000
IF:	1:200-1000
ELISA:	1:5000-20000
IP:	1:50-200

Storage

-15°C to -25°C/1 year (Do not lower than -25°C)

Basic Information

Clonality	Monoclonal
-----------	------------

Immunogen Information

Specificity	Endogenous
-------------	------------

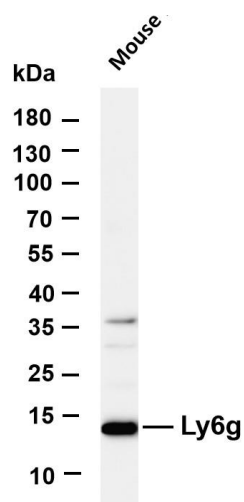
Target Information

Gene name	Ly6g
Protein Name	Lymphocyte antigen 6G; Ly-6G; Ly-6G.1

Organism	Gene ID	UniProt ID
Mouse	546644	P35461

Cellular Localization	Membrane
Tissue specificity	Expressed in bone marrow.

Validation Data

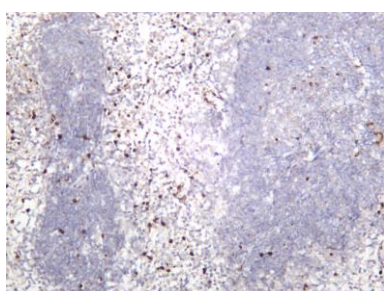


Various whole cell lysates were separated by 4-20% SDS-PAGE, and the membrane was blotted with anti-Ly6g antibody. The HRP conjugated Goat anti-Rabbit IgG(H + L) antibody was used to detect the antibody.

Lane 1: Mouse kidney

Predicted band size: 14kDa

Observed band size: 14kDa



Mouse spleen was stained with anti-Ly6g rabbit antibody

For Research Use Only