

ATG3 Rabbit mAb (AR1107)

Key Features

Host Species:	Rabbit
Reactivity:	Human, Mouse, Rat
Applications:	WB, IHC, IF, IP, ELISA
Isotype:	IgG, Kappa
MW:	36kD (Calculated) 36kD (Observed)

Recommended Dilution Ratios

IHC:	1:200-1000
WB:	1:500-3000
IF:	1:200-1000
ELISA:	1:5000-20000
IP:	1:50-200

Storage

-15°C to -25°C/1 year (Do not lower than -25°C)

Basic Information

Clonality	Monoclonal
-----------	------------

Immunogen Information

Specificity	Endogenous
-------------	------------

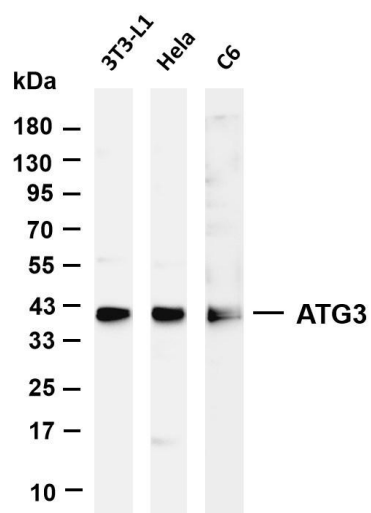
Target Information

Gene name	ATG3 APG3 APG3L
Protein Name	ATG3

Organism	Gene ID	UniProt ID
Human	64422	Q9NT62
Mouse	67841	Q9CPX6
Rat	171415	Q6AZ50

Cellular Localization	Cytoplasm
Tissue specificity	Widely expressed, with a highest expression in heart, skeletal muscle, kidney, liver and placenta.

Validation Data



Various whole cell lysates were separated by 4-20% SDS-PAGE, and the membrane was blotted with anti-ATG3 antibody. The HRP-conjugated Goat anti-Rabbit IgG(H + L) antibody was used to detect the antibody.

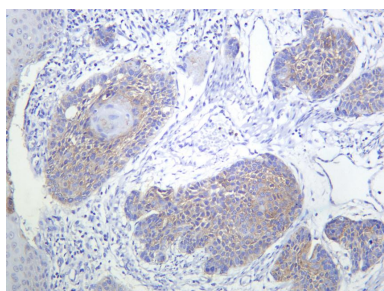
Lane 1: 3T3-L1

Lane 2: HeLa

Lane 3: C6

Predicted band size: 36kDa

Observed band size: 36kDa



Human esophageal cancer was stained with anti-ATG3 Rabbit antibody

For Research Use Only