

## CD89 Rabbit mAb (AR1429)

### Key Features

Host Species:	Rabbit
Reactivity:	Human
Applications:	WB,IHC,IF,ICC,Flow Cyt,IP
Isotype:	IgG,Kappa
MW:	32kD (Calculated) 32kD (Observed)

### Recommended Dilution Ratios

IHC:	1:100-300
WB:	1:1000-5000
ICC/IF:	1:100-300
FC:	1:100-300
IP:	1:50-200

### Storage

-15°C to -25°C/1 year (Do not lower than -25°C)

### Basic Information

Clonality	Monoclonal
-----------	------------

### Immunogen Information

Specificity	Endogenous
-------------	------------

### Target Information

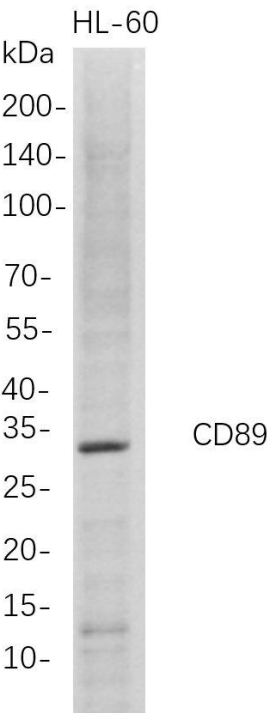
Gene name	FCAR; CD89
Protein Name	Immunoglobulin alpha Fc receptor; IgA Fc receptor; CD antigen CD89

	Organism	Gene ID	UniProt ID
	Human	2204	P24071
Cellular Localization	[Isoform A.1]: Cell membrane; Single-pass type I membrane protein.; [Isoform A.2]: Cell membrane; Single-pass type I membrane protein.; [Isoform A.3]: Cell membrane; Single pass type I membrane protein.; [Isoform B]: Secreted.; [Isoform B-delta-S2]: Secreted.		

Tissue specificity

Isoform A.1, isoform A.2 and isoform A.3 are differentially expressed between blood and mucosal myeloid cells. Isoform A.1, isoform A.2 and isoform A.3 are expressed in monocytes. Isoform A.1 and isoform A.2 are expressed in alveolar macrophages; however, only one isoform is expressed at alveolar macrophages surfaces. {ECO:0000269|PubMed:8666819, ECO:0000269|PubMed:8836118}.

Validation Data



Western Blot analysis of HL-60 whole cell lysates were separated by 4-20% SDS-PAGE, and the membrane was blotted with anti-CD89 rabbit mAb. The HRP-conjugated Goat anti-Rabbit IgG(H + L) antibody was used to detect the antibody.  
Lane1: HL-60  
Predicted band size: 32kDa  
Observed band size: 32kDa

For Research Use Only