

DARPP-32 Rabbit mAb (AR1442)

Key Features

Host Species:	Rabbit
Reactivity:	Human, Mouse, Rat
Applications:	WB, IHC, IF, IP, ELISA
Isotype:	IgG, Kappa
MW:	23kD (Calculated) 32kD (Observed)

Recommended Dilution Ratios

IHC:	1:200-1000
WB:	1:2000-10000
IF:	1:200-1000
ELISA:	1:5000-20000
IP:	1:50-200

Storage

-15°C to -25°C/1 year (Do not lower than -25°C)

Basic Information

Clonality	Monoclonal
-----------	------------

Immunogen Information

Specificity	Endogenous
-------------	------------

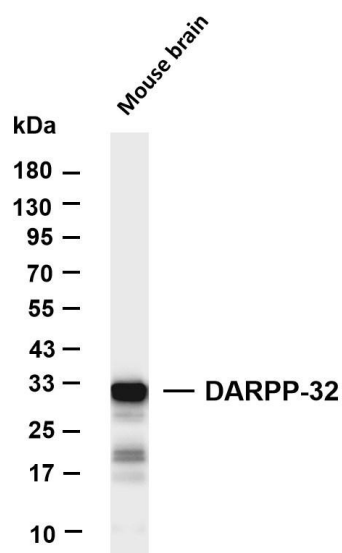
Target Information

Gene name	PPP1R1B
Protein Name	Protein phosphatase 1 regulatory subunit 1B

Organism	Gene ID	UniProt ID
Human	84152	Q9UD71
Mouse	19049	Q60829
Rat	360616	Q6J4I0

Cellular Localization	Cytoplasm
Tissue specificity	Adipose tissue, Brain, Cerebellum, Colon, Ovary

Validation Data

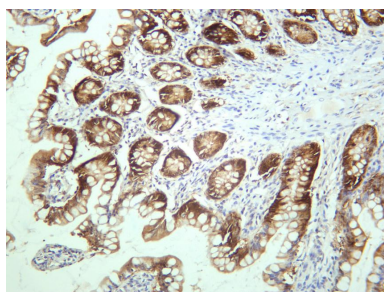


Various whole cell lysates were separated by 4-20% SDS-PAGE, and the membrane was blotted with anti-DARPP-32 antibody. The HRP-conjugated Goat anti-Rabbit IgG(H + L) antibody was used to detect the antibody.

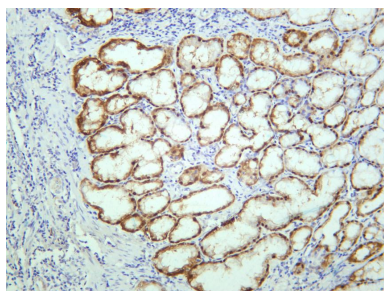
Lane 1: Mouse brain

Predicted band size: 23kDa

Observed band size: 32kDa



Human colon was stained with anti-DARPP-32 rabbit antibody



Human gastric adenocarcinoma was stained with anti-DARPP-32 rabbit antibody

For Research Use Only