

DDX4 Rabbit mAb (AR1443)

Key Features

Host Species:	Rabbit
Reactivity:	Human, Mouse, Rat
Applications:	WB, IHC, IF, IP, ELISA
Isotype:	IgG, Kappa
MW:	79kD (Calculated) 79kD (Observed)

Recommended Dilution Ratios

IHC:	1:200-1000
WB:	1:2000-10000
IF:	1:200-1000
ELISA:	1:5000-20000
IP:	1:50-200

Storage

-15°C to -25°C/1 year (Do not lower than -25°C)

Basic Information

Clonality	Monoclonal
-----------	------------

Immunogen Information

Specificity	Endogenous
-------------	------------

Target Information

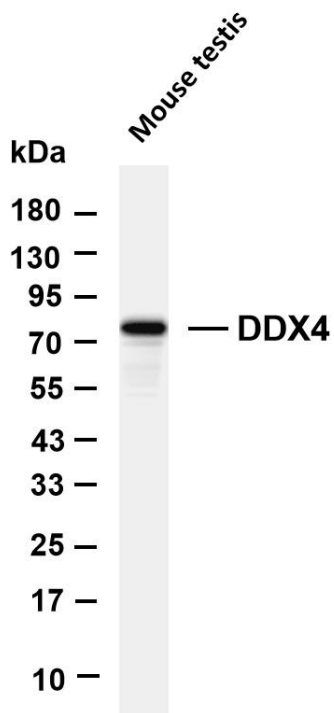
Gene name	DDX4
Protein Name	Probable ATP-dependent RNA helicase DDX4

Organism	Gene ID	UniProt ID
Human	54514	Q9NQI0
Mouse		Q61496

Cellular Localization	Cytoplasm. Cytoplasm, perinuclear region. Component of the meiotic nuage, also named P granule, a germ-cell-specific organelle required to repress transposon activity during meiosis.
Tissue specificity	Expressed only in ovary and testis. Expressed in migratory primordial germ cells in the region of the gonadal ridge in both

sexes.

Validation Data

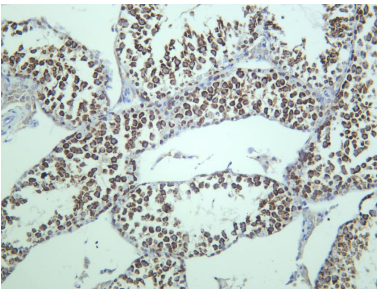


Various whole cell lysates were separated by 4-20% SDS-PAGE, and the membrane was blotted with anti-DDX4 antibody. The HRP-conjugated Goat anti-Rabbit IgG (H + L) antibody was used to detect the antibody.

Lane 1: Mouse testis

Predicted band size: 79kDa

Observed band size: 79kDa



Mouse testis was stained with anti-DDX4 rabbit antibody

For Research Use Only