

VEGF Receptor 2 Rabbit mAb (AR1460)

Key Features

Host Species:	Rabbit
Reactivity:	Human,Mouse,Rat
Applications:	WB,IHC,IF,IP,ELISA
Isotype:	IgG,Kappa
MW:	151kD (Calculated) 230kD (Observed)

Recommended Dilution Ratios

IHC:	1:1000-4000
WB:	1:2000-10000
IF:	1:200-1000
ELISA:	1:5000-20000
IP:	1:50-200

Storage

-15°C to -25°C/1 year (Do not lower than -25°C)

Basic Information

Clonality	Monoclonal
-----------	------------

Immunogen Information

Specificity	Endogenous
-------------	------------

Target Information

Gene name	KDR FLK1 VEGFR2
Protein Name	VEGFR2

Organism	Gene ID	UniProt ID
Human	3791	P35968
Mouse		P35918
Rat		O08775

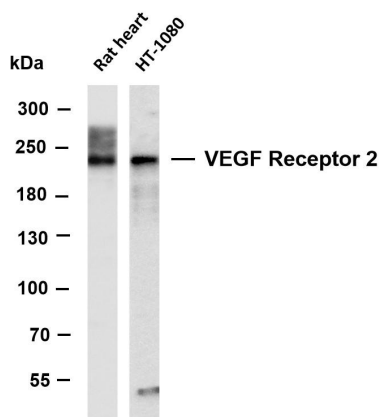
Cellular Localization	Cell junction. Endoplasmic reticulum. Cell membrane. Localized with RAP1A at cell-cell junctions (By similarity). Colocalizes with ERN1 and XBP1 in the endoplasmic reticulum in endothelial cells in a vascular endothelial growth factor (VEGF)-dependent manner
-----------------------	--

(PubMed:23529610); [Isoform 1]: Cell membrane; Single-pass type I membrane protein. Cytoplasm. Nucleus. Cytoplasmic vesicle. Early endosome. Detected on caveolae-enriched lipid rafts at the cell surface. Is recycled from the plasma membrane to endosomes and back again. Phosphorylation triggered by VEGFA binding promotes internalization and subsequent degradation. VEGFA binding triggers internalization and translocation to the nucleus; [Isoform 2]: Secreted; [Isoform 3]: Secreted.

Tissue specificity

Detected in cornea (at protein level). Widely expressed.

Validation Data



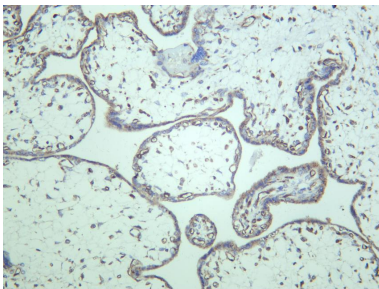
Various whole cell lysates were separated by 4-20% SDS-PAGE, and the membrane was blotted with anti-VEGF Receptor 2 antibody. The HRP-conjugated Goat anti-Rabbit IgG(H + L) antibody was used to detect the antibody.

Lane 1: Rat heart

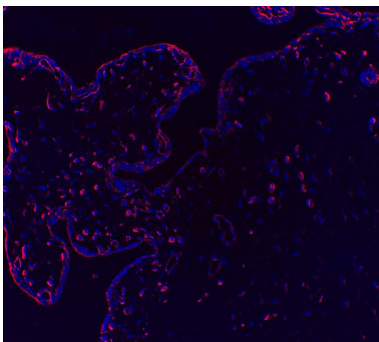
Lane 2: HT-1080

Predicted band size: 151kDa

Observed band size: 230kDa



Human placenta was stained with anti-VEGF Receptor 2 rabbit antibody



Immunofluorescence analysis of Human placenta