

KCTD3 Rabbit mAb (AR1487)

Key Features

Host Species:	Rabbit
Reactivity:	Human
Applications:	WB
Isotype:	IgG,Kappa
MW:	89kD (Calculated) 89kD (Observed)

Recommended Dilution Ratios

WB:	1:1000-5000
-----	-------------

Storage

-15°C to -25°C/1 year (Do not lower than -25°C)

Basic Information

Clonality	Monoclonal
-----------	------------

Immunogen Information

Specificity	Endogenous
-------------	------------

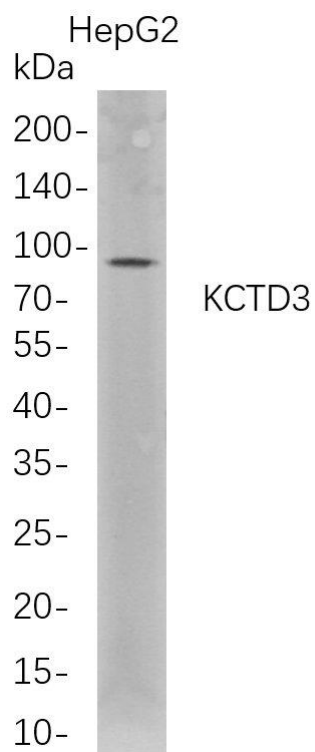
Target Information

Gene name	KCTD3
Protein Name	BTB/POZ domain-containing protein KCTD3; Renal carcinoma antigen NY-REN-45

Organism	Gene ID	UniProt ID
Human	51133	Q9Y597
Mouse	226823	Q8BFX3

Cellular Localization	Cell membrane.
Tissue specificity	Broadly expressed in normal tissues. {ECO:0000269 PubMed:10508479}.

Validation Data



Western Blot analysis of HepG2 whole cell lysates were separated by 4-20% SDS-PAGE, and the membrane was blotted with anti-KCTD3 rabbit mAb. The HRP-conjugated Goat anti-Rabbit IgG(H + L) antibody was used to detect the antibody.

Lane 1: HepG2

Predicted band size: 89kDa

Observed band size: 89kDa

For Research Use Only