

KCTD9 Rabbit mAb (AR1488)

Key Features

Host Species:	Rabbit
Reactivity:	Human
Applications:	WB,IF,ICC
Isotype:	IgG,Kappa
MW:	43kD (Calculated) 43kD (Observed)

Recommended Dilution Ratios

WB:	1:1000-5000
ICC/IF:	1:100-300

Storage

-15°C to -25°C/1 year (Do not lower than -25°C)

Basic Information

Clonality	Monoclonal
-----------	------------

Immunogen Information

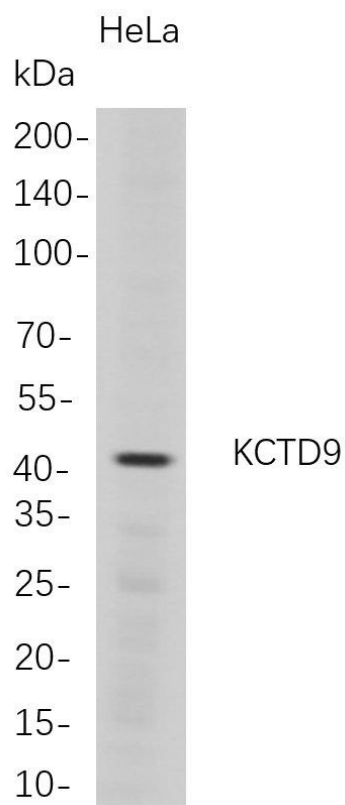
Specificity	Endogenous
-------------	------------

Target Information

Gene name	KCTD9
Protein Name	BTB/POZ domain-containing protein KCTD9

Organism	Gene ID	UniProt ID
Human	54793	Q7L273

Validation Data



Western Blot analysis of HeLa whole cell lysates were separated by 4-20% SDS-PAGE, and the membrane was blotted with anti-KCTD9 rabbit mAb. The HRP-conjugated Goat anti-Rabbit IgG(H + L) antibody was used to detect the antibody.

Lane 1: HeLa

Predicted band size: 43kDa

Observed band size: 43kDa

For Research Use Only