

Podoplanin Rabbit mAb (AR1533)

Key Features

Host Species:	Rabbit
Reactivity:	Human, Mouse, Rat
Applications:	WB, IHC, IF, IP, ELISA
Isotype:	IgG, Kappa
MW:	17kD (Calculated) 36kD (Observed)

Recommended Dilution Ratios

IHC:	1:200-1000
WB:	1:1000-5000
IF:	1:200-1000
ELISA:	1:500-20000
IP:	1:50-200

Storage

-15°C to -25°C/1 year (Do not lower than -25°C)

Basic Information

Clonality	Monoclonal
-----------	------------

Immunogen Information

Specificity	Endogenous
-------------	------------

Target Information

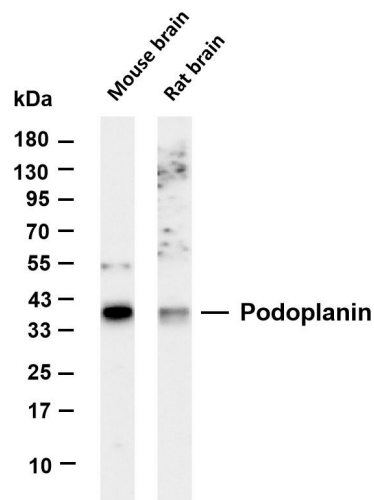
Gene name	PDPN GP36 PSEC0003 PSEC0025
-----------	-----------------------------

Protein Name	Aggrus Glycoprotein 36 Gp36 PA2.26 antigen T1-alpha T1A
--------------	---

Organism	Gene ID	UniProt ID
Human	10630	Q86YL7
Mouse		Q62011
Rat		Q64294

Cellular Localization	Membrane, Cytoplasm
Tissue specificity	Tonsil/ Appendix

Validation Data



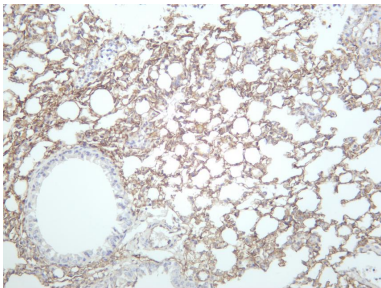
Various whole cell lysates were separated by 4-20% SDS-PAGE, and the membrane was blotted with anti-Podoplanin antibody. The HRP-conjugated Goat anti-Rabbit IgG(H + L) antibody was used to detect the antibody.

Lane 1: Mouse brain

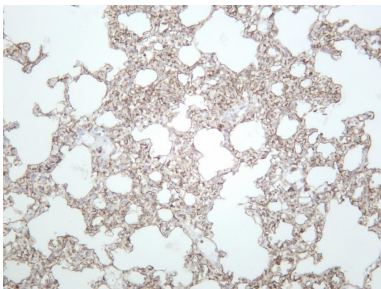
Lane 2: Rat brain

Predicted band size: 17kDa

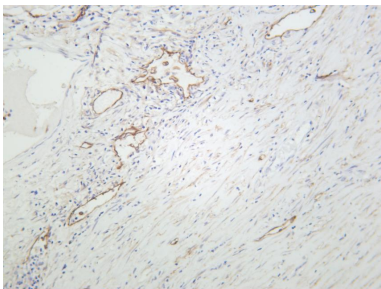
Observed band size: 36kDa



Mouse lung was stained with anti-Podoplanin rabbit antibody



Rat lung was stained with anti-Podoplanin rabbit antibody



Human lung squamous carcinoma was stained with anti-Podoplanin rabbit antibody

For Research Use Only