

TSFM Rabbit mAb (AR1578)

Key Features

Host Species:	Rabbit
Reactivity:	Human
Applications:	WB,IF,ICC
Isotype:	IgG,Kappa
MW:	35kD (Calculated) 36kD (Observed)

Recommended Dilution Ratios

WB:	1:1000-5000
ICC/IF:	1:100-300

Storage

-15°C to -25°C/1 year (Do not lower than -25°C)

Basic Information

Clonality	Monoclonal
-----------	------------

Immunogen Information

Specificity	Endogenous
-------------	------------

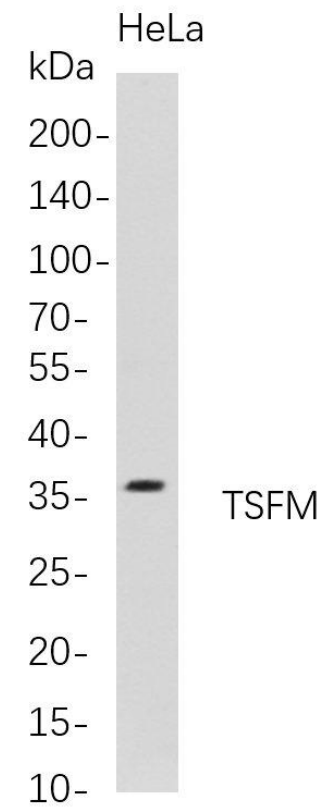
Target Information

Gene name	TSFM
Protein Name	Elongation factor Ts, mitochondrial; EF-Ts; EF-TsMt

Organism	Gene ID	UniProt ID
Human	10102	P43897
Mouse	66399	Q9CZR8
Rat		Q9QYU2

Cellular Localization	Mitochondrion.
Tissue specificity	Expressed in all tissues, with the highest levels of expression in skeletal muscle, liver and kidney.

Validation Data



Western Blot analysis of HeLa whole cell lysates were separated by 4-20% SDS-PAGE, and the membrane was blotted with anti-TSFM rabbit mAb. The HRP-conjugated Goat anti-Rabbit IgG(H + L) antibody was used to detect the antibody.

Lane 1: HeLa

Predicted band size: 35kDa

Observed band size: 36kDa

For Research Use Only