

## TP53INP1 Rabbit pAb (AR20005)

### Key Features

Host Species:	Rabbit
Reactivity:	Human
Applications:	WB,IHC,IF,ELISA
Isotype:	IgG
MW:	27kD (Observed)

### Recommended Dilution Ratios

IHC:	1:100-300
WB:	1:500-2000
IF:	1:50-200
ELISA:	1:40000

### Storage

-15°C to -25°C/1 year (Do not lower than -25°C)

### Basic Information

Clonality	Polyclonal
-----------	------------

### Immunogen Information

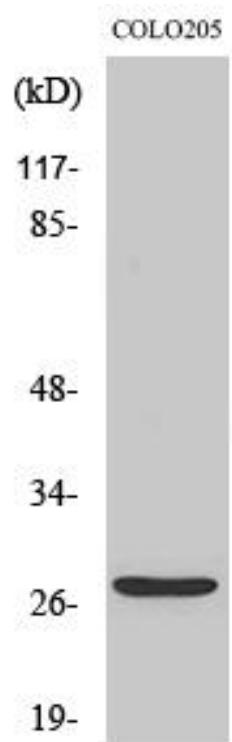
Specificity	TP53INP1 Polyclonal Antibody detects endogenous levels of TP53INP1 protein.
-------------	---

### Target Information

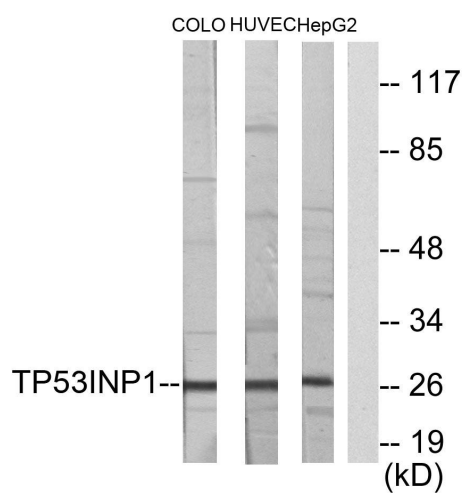
Gene name	TP53INP1
Protein Name	Tumor protein p53-inducible nuclear protein 1

	Organism	Gene ID	UniProt ID
	Human	94241	Q96A56
	Mouse		Q9QXE4
Cellular Localization	Cytoplasm, cytosol. Nucleus. Nucleus, PML body. Cytoplasmic vesicle, autophagosome. Shuttles between the nucleus and the cytoplasm, depending on cellular stress conditions, and re-localizes to autophagosomes on autophagy activation.		
Tissue specificity	Ubiquitously expressed.		

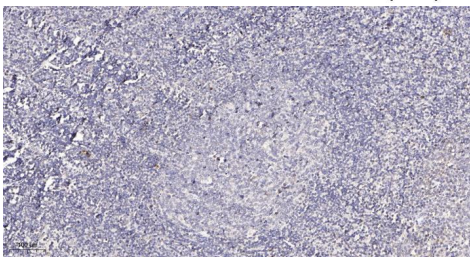
Validation Data



Western Blot analysis of various cells using TP53INP1 Polyclonal Antibody diluted at 1:1000. Secondary antibody was diluted at 1:20000 cells nucleus extracted by Minute TM Cytoplasmic and Nuclear Fractionation kit (SC-003, Inventbiotech, MN, USA).



Western blot analysis of lysates from COLO205, HUVEC, and HepG2 cells, using TP53INP1 Antibody. The lane on the right is blocked with the synthesized peptide.



Immunohistochemical analysis of paraffin-embedded human tonsil. 1, Antibody was diluted at 1:200 (4° overnight). 2, Tris-EDTA, pH 9.0 was used for antigen retrieval. 3, Secondary antibody was diluted at 1:200 (room temperature, 30 min).