

## p53 (Phospho Ser15) Rabbit pAb (AR20005)

### Key Features

Host Species:	Rabbit
Reactivity:	Human,Rat
Applications:	WB,IHC,IP,IF,ELISA
Isotype:	IgG
MW:	48kD (Observed)

### Recommended Dilution Ratios

IHC:	1:100-300
WB:	1:500-2000
IP:	2-5 ug/mg lysate
IF:	1:200-1000
ELISA:	1:10000

### Storage

-15°C to -25°C/1 year (Do not lower than -25°C)

### Basic Information

Clonality	Polyclonal
-----------	------------

### Immunogen Information

Specificity	Phospho-p53 (S15) Polyclonal Antibody detects endogenous levels of p53 protein only when phosphorylated at S15.The name of modified sites may be influenced by many factors, such as species (the modified site was not originally found in human samples) and the change of protein sequence (the previous protein sequence is incomplete, and the protein sequence may be prolonged with the development of protein sequencing technology). When naming, we will use the "numbers" in historical reference to keep the sites consistent with the reports. The antibody binds to the following modification sequence (lowercase letters are modification sites):PLsQE
-------------	--

### Target Information

Gene name	TP53 P53
Protein Name	Antigen NY-CO-13;BCC7;Cellular tumor antigen p53;FLJ92943;LFS1;Mutant tumor protein 53;p53;p53 tumor

suppressor;P53\_HUMAN;Phosphoprotein p53;Tp53;Transformation related protein 53;TRP53;tumor antigen p55;Tumor protein 53;Tumor protein p53;Tumor suppressor p53

Organism	Gene ID	UniProt ID
Human	7157	P04637
Mouse	22059	P02340
Rat	24842	P10361

#### Cellular Localization

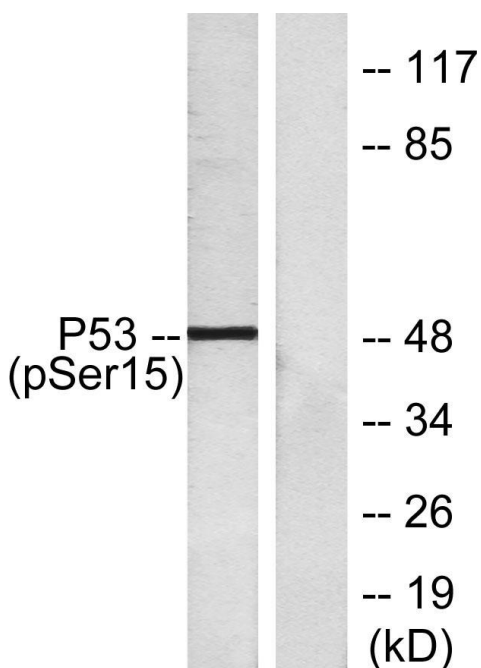
Nuclear

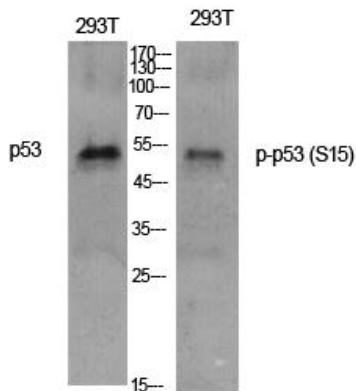
Ubiquitous. Isoforms are expressed in a wide range of normal tissues but in a tissue-dependent manner. Isoform 2 is expressed in most normal tissues but is not detected in brain, lung, prostate, muscle, fetal brain, spinal cord and fetal liver. Isoform 3 is expressed in most normal tissues but is not detected in lung, spleen, testis, fetal brain, spinal cord and fetal liver. Isoform 7 is expressed in most normal tissues but is not detected in prostate, uterus, skeletal muscle and breast. Isoform 8 is detected only in colon, bone marrow, testis, fetal brain and intestine.

#### Tissue specificity

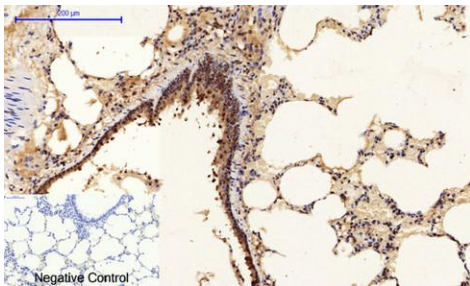
Isoform 9 is expressed in most normal tissues but is not detected in brain, heart, lung, fetal liver, salivary gland, breast or intestine.

### Validation Data





Western Blot analysis of various cells using Phospho-p53 (S15) Polyclonal Antibody diluted at 1:1000

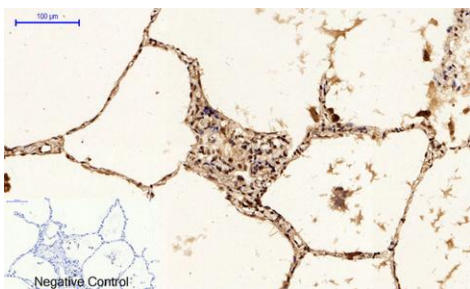


Immunohistochemical analysis of paraffin-embedded Rat-lung tissue.

1, p53 (phospho Ser15) Polyclonal Antibody was diluted at 1:200 (4°C, overnight).

2, Sodium citrate pH 6.0 was used for antibody retrieval (>98 °C, 20min).

3, Secondary antibody was diluted at 1:200 (room temperature, 30min). Negative control was used by secondary antibody only.

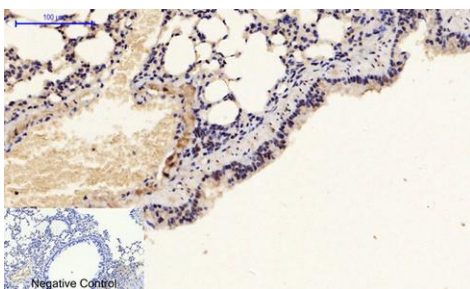


Immunohistochemical analysis of paraffin-embedded Human-lung tissue.

1, p53 (phospho Ser15) Polyclonal Antibody was diluted at 1:200 (4°C, overnight).

2, Sodium citrate pH 6.0 was used for antibody retrieval (>98 °C, 20min).

3, Secondary antibody was diluted at 1:200 (room temperature, 30min). Negative control was used by secondary antibody only.

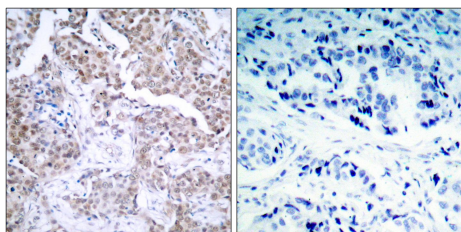


Immunohistochemical analysis of paraffin-embedded Mouse-lung tissue.

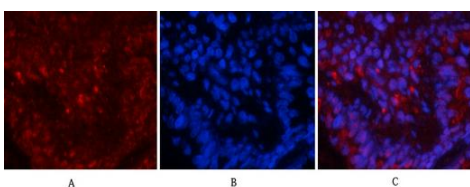
1, p53 (phospho Ser15) Polyclonal Antibody was diluted at 1:200 (4°C, overnight).

2, Sodium citrate pH 6.0 was used for antibody retrieval (>98 °C, 20min).

3, Secondary antibody was diluted at 1:200 (room temperature, 30min). Negative control was used by secondary antibody only.



Immunohistochemistry analysis of paraffin-embedded human breast carcinoma, using p53 (Phospho-Ser15) Antibody. The picture on the right is blocked with the phospho peptide.



Immunofluorescence analysis of rat-lung tissue.

1, p53 (phospho Ser15) Polyclonal Antibody (red) was diluted at 1:200 (4°C, overnight).

2, Cy3 labeled Secondary antibody was diluted at 1:300 (room temperature, 50min).

3,Picture B: DAPI(blue) 10min. Picture A:Target. Picture B: DAPI.  
Picture C:merge of A+B

Immunofluorescence analysis of rat-spleen tissue.

1,p53 (phospho Ser15) Polyclonal Antibody(red) was diluted at 1:200(4°C,overnight).

2, Cy3 labled Secondary antibody was diluted at 1:300(room temperature, 50min).

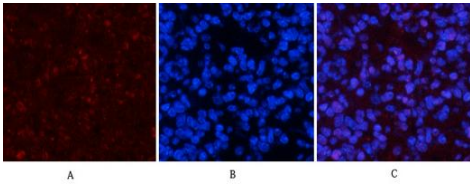
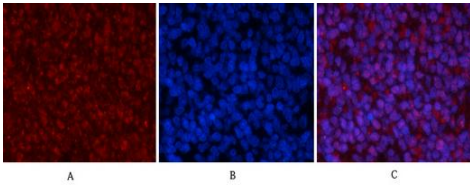
3,Picture B: DAPI(blue) 10min. Picture A:Target. Picture B: DAPI.  
Picture C:merge of A+B

Immunofluorescence analysis of mouse-spleen tissue.

1,p53 (phospho Ser15) Polyclonal Antibody(red) was diluted at 1:200(4°C,overnight).

2, Cy3 labled Secondary antibody was diluted at 1:300(room temperature, 50min).

3,Picture B: DAPI(blue) 10min. Picture A:Target. Picture B: DAPI.  
Picture C:merge of A+B



For Research Use Only