

## IL-33 Rabbit pAb (AR20007)

### Key Features

Host Species:	Rabbit
Reactivity:	Human,Rat,Mouse
Applications:	WB,IHC,IF,ELISA
Isotype:	IgG
MW:	31kD (Observed)

### Recommended Dilution Ratios

IHC:	1:100-300
WB:	1:500-2000
IF:	1:50-200
ELISA:	1:20000

### Storage

-15°C to -25°C/1 year (Do not lower than -25°C)

### Basic Information

Clonality	Polyclonal
-----------	------------

### Immunogen Information

Specificity	IL-33 Polyclonal Antibody detects endogenous levels of IL-33 protein.
-------------	---

### Target Information

Gene name	IL33
Protein Name	Interleukin-33

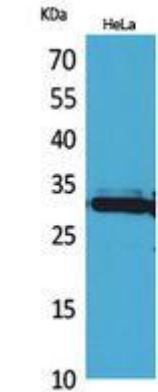
Organism	Gene ID	UniProt ID
Human	90865	O95760
Mouse	77125	Q8BVZ5
Rat	361749	Q66H70

Cellular Localization	Nucleus . Chromosome . Cytoplasm . Cytoplasmic vesicle, secretory vesicle . Secreted .Associates with heterochromatin and mitotic chromosomes (PubMed:17185418). The secretion is dependent on protein unfolding and facilitated by the cargo receptor TMED10; it results in protein translocation from the cytoplasm into the ERGIC
-----------------------	--

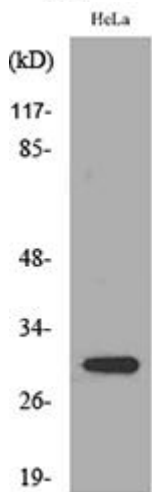
(endoplasmic reticulum Golgi intermediate compartment)  
 followed by vesicle entry and secretion (PubMed:32272059).  
 Expressed at high level in high endothelial venules found in tonsils,  
 Peyer patches and mesenteric lymph nodes. Almost undetectable  
 in placenta.

Tissue specificity

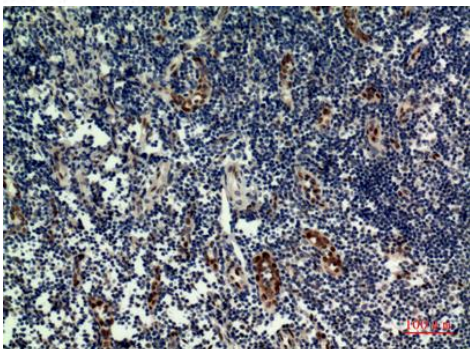
## Validation Data



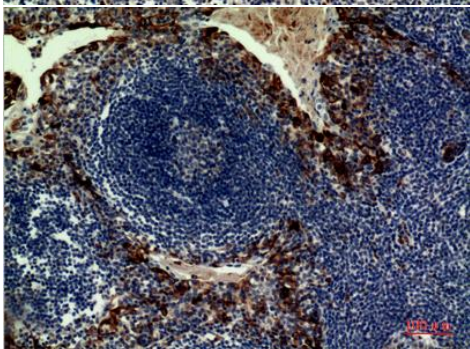
Western Blot analysis of HeLa cells using IL-33 Polyclonal Antibody.  
 Secondary antibody was diluted at 1:20000



Western blot analysis of lysate from HeLa cells, using IL33 Antibody.



Immunohistochemical analysis of paraffin-embedded human-  
 tonsilla, antibody was diluted at 1:100



Immunohistochemical analysis of paraffin-embedded human-  
 tonsilla, antibody was diluted at 1:100

For Research Use Only