

CD28 Rabbit pAb (AR20000)

Key Features

| | |
|---------------|-------------------|
| Host Species: | Rabbit |
| Reactivity: | Human, Mouse, Rat |
| Applications: | WB, ELISA |
| Isotype: | IgG |
| MW: | 25kD (Observed) |

Recommended Dilution Ratios

| | |
|--------|------------|
| WB: | 1:500-2000 |
| ELISA: | 1: 20000 |

Storage

-15°C to -25°C/1 year (Do not lower than -25°C)

Basic Information

| | |
|-----------|------------|
| Clonality | Polyclonal |
|-----------|------------|

Immunogen Information

| | |
|-------------|---|
| Specificity | CD28 Polyclonal Antibody detects endogenous levels of CD28 protein. |
|-------------|---|

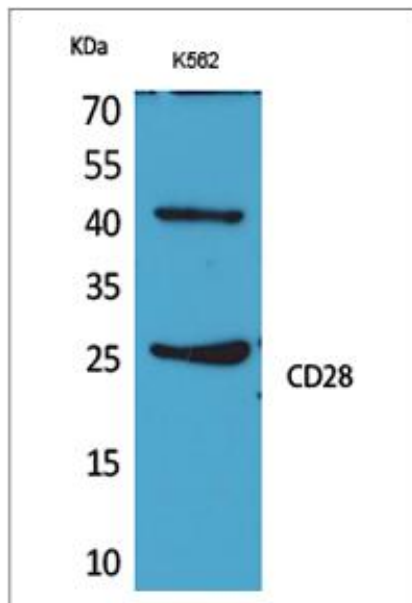
Target Information

| | |
|--------------|---|
| Gene name | CD28 |
| Protein Name | T-cell-specific surface glycoprotein CD28 |

| Organism | Gene ID | UniProt ID |
|----------|---------|------------|
| Human | 940 | P10747 |
| Mouse | | P31041 |

| | |
|-----------------------|--|
| Cellular Localization | Membrane; Single-pass type I membrane protein.; [Isoform 3]: Cell surface. |
| Tissue specificity | Expressed in T-cells and plasma cells, but not in less mature B-cells. |

Validation Data



Western Blot analysis of K562 cells using CD28 Polyclonal Antibody. Secondary antibody was diluted at 1:20000

For Research Use Only