

GSDMD N-terminal Rabbit pAb (AR20008)

Key Features

Host Species:	Rabbit
Reactivity:	Human,Mouse,Rat
Applications:	IF,WB,IHC
Isotype:	IgG
MW:	36kD, 55kD (Observed)

Recommended Dilution Ratios

IHC:	1:50-300
WB:	1:1000-3000
IF:	1:50-200

Storage

-15°C to -25°C/1 year (Do not lower than -25°C)

Basic Information

Clonality	Polyclonal
-----------	------------

Immunogen Information

Specificity	The antibody detects endogenous full length and n-terminal fragment of gsdmd protein
-------------	--

Target Information

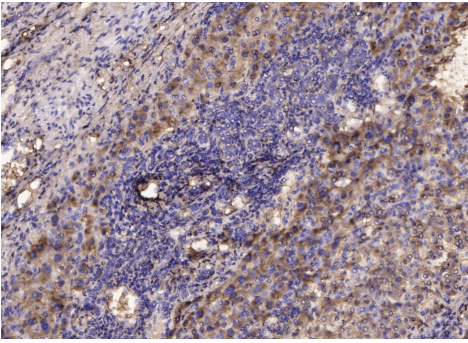
Gene name	GSDMD
Protein Name	Gasdermin domain-containing protein 1,Gasdermin-D,GSDMD,GSDMD-CT,GSDMDNT,GSDMD_HUMAN

Organism	Gene ID	UniProt ID
Human		P57764

Cellular Localization	[Gasdermin-D]: Cytoplasm, cytosol . Inflammasome . In response to a canonical inflammasome stimulus, such as nigericin, recruited to NLRP3 inflammasome with similar kinetics to that of uncleaved CASP1 precursor. .; [Gasdermin-D, N-terminal]: Cell membrane ; Multi-pass membrane protein . Secreted . Released in the extracellular milieu following pyroptosis. .; [Gasdermin-D, C-terminal]: Cytoplasm, cytosol
Tissue specificity	Expressed in the suprabasal cells of esophagus, as well as in the isthmus/neck, pit, and gland of the stomach, suggesting

preferential expression in differentiating cells.

Validation Data



Immunohistochemical analysis of paraffin-embedded human Moderately differentiated hepatocellular carcinoma Antibody was diluted at 1:200(4° overnight).

For Research Use Only