

## K-Ras Rabbit pAb (AR20009)

### Key Features

Host Species:	Rabbit
Reactivity:	Human,Rat,Mouse
Applications:	WB,IHC,IF,ELISA
Isotype:	IgG
MW:	22kD (Observed)

### Recommended Dilution Ratios

IHC:	1:100-300
WB:	1:500-2000
IF:	1:50-200
ELISA:	1:10000

### Storage

-15°C to -25°C/1 year (Do not lower than -25°C)

### Basic Information

Clonality	Polyclonal
-----------	------------

### Immunogen Information

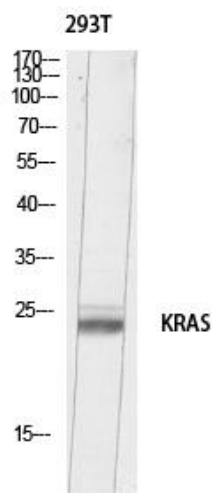
Specificity	K-Ras Polyclonal Antibody detects endogenous levels of v-Ki-ras2 Kirsten rat sarcoma viral oncogene homolog
-------------	---

### Target Information

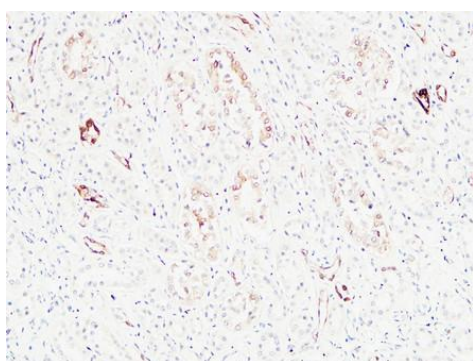
Gene name	KRAS
Protein Name	v-Ki-ras2 Kirsten rat sarcoma viral oncogene homolog

	Organism	Gene ID	UniProt ID
	Human	3845	P01116
	Mouse	16653	P32883
	Rat		P08644
Cellular Localization	Cell membrane ; Lipid-anchor ; Cytoplasmic side . Endomembrane system . Cytoplasm, cytosol .; [Isoform 2B]: Cell membrane ; Lipid-anchor .		
Tissue specificity	Brain,Cervix carcinoma,Colon carcinoma,Gallbladder tumor,Lung,Lung carcinom		

## Validation Data



Western blot analysis of 293T lysis using KRAS antibody. Antibody was diluted at 1:500. Secondary antibody was diluted at 1:20000



Immunohistochemical analysis of paraffin-embedded Human kidney. 1, Antibody was diluted at 1:200(4 ° overnight). 2, High-pressure and temperature EDTA, pH8.0 was used for antigen retrieval. 3,Secondary antibody was diluted at 1:200(room temperature, 30min).

For Research Use Only