

## SLP-76 Rabbit pAb(AR20012)

### Key Features

Host Species:	Rabbit
Reactivity:	Human, Mouse, Rat
Applications:	WB, IHC, IF, ELISA
Isotype:	IgG
MW:	75kD (Observed)

### Recommended Dilution Ratios

IHC:	1:100-300
WB:	1:500-2000
IF:	1:50-200
ELISA:	1: 10000

### Storage

-15°C to -25°C/1 year (Do not lower than -25°C)

### Basic Information

Clonality	Polyclonal
-----------	------------

### Immunogen Information

Specificity	SLP-76 Polyclonal Antibody detects endogenous levels of SLP-76 protein
-------------	--

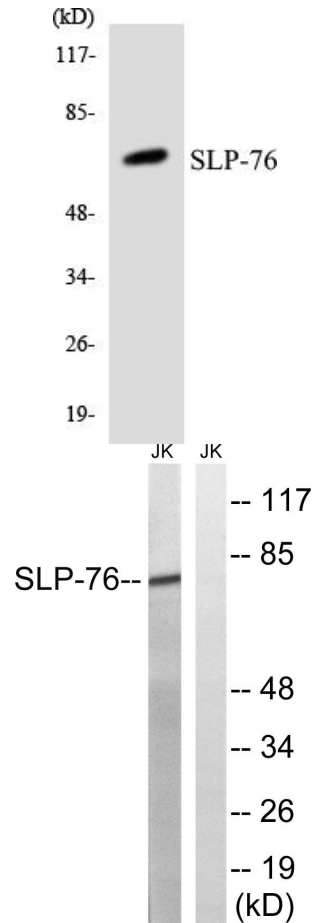
### Target Information

Gene name	LCP2
Protein Name	Lymphocyte cytosolic protein 2

Organism	Gene ID	UniProt ID
Human	3937	Q13094
Mouse	16822	Q60787

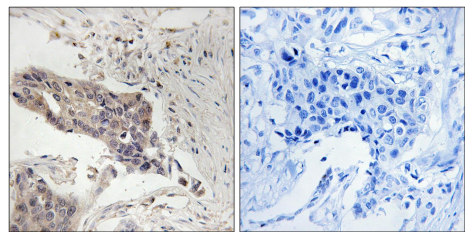
Cellular Localization	Cytoplasm
Tissue specificity	Highly expressed in spleen, thymus and peripheral blood leukocytes. Highly expressed also in T-cell and monocytic cell lines, expressed at lower level in B-cell lines. Not detected in fibroblast or neuroblastoma cell lines.

Validation Data



Western blot analysis of the lysates from HT-29 cells using SLP-76 antibody.

Western blot analysis of lysates from Jurkat cells, treated with EGF 200ng/ml 5', using SLP-76 Antibody. The lane on the right is blocked with the synthesized peptide.



Immunohistochemistry analysis of paraffin-embedded human breast carcinoma tissue, using SLP-76 Antibody. The picture on the right is blocked with the synthesized peptide.

For Research Use Only