

SLP-76 Rabbit pAb(AR20013)

Key Features

Host Species:	Rabbit
Reactivity:	Human, Mouse, Rat
Applications:	WB, IHC, IF, ELISA
Isotype:	IgG
MW:	60kD (Observed)

Recommended Dilution Ratios

IHC:	1:100-300
WB:	1:500-2000
IF:	1:50-200
ELISA:	1: 10000

Storage

-15°C to -25°C/1 year (Do not lower than -25°C)

Basic Information

Clonality	Polyclonal
-----------	------------

Immunogen Information

Specificity	SLP-76 Polyclonal Antibody detects endogenous levels of SLP-76 protein
-------------	--

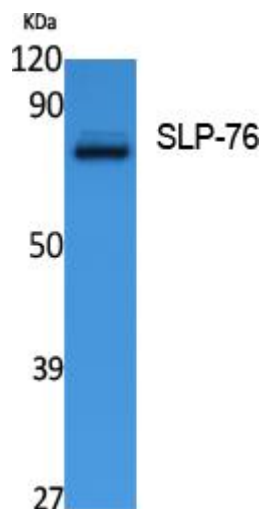
Target Information

Gene name	LCP2
Protein Name	Lymphocyte cytosolic protein 2

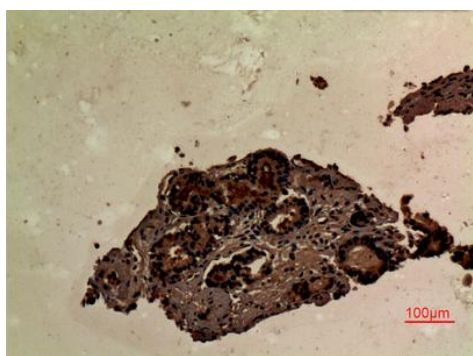
Organism	Gene ID	UniProt ID
Human	3937	Q13094
Mouse	16822	Q60787

Cellular Localization	Cytoplasm
Tissue specificity	Highly expressed in spleen, thymus and peripheral blood leukocytes. Highly expressed also in T-cell and monocytic cell lines, expressed at lower level in B-cell lines. Not detected in fibroblast or neuroblastoma cell lines.

Validation Data



Western Blot analysis of extracts from Jurkat cells, using SLP-76 Polyclonal Antibody. Secondary antibody was diluted at 1:20000



Immunohistochemical analysis of paraffin-embedded human-prostate-cancer, antibody was diluted at 1:100

For Research Use Only