

SLP-76 (Phospho Ser376) Rabbit pAb(AR20014)

Key Features

Host Species:	Rabbit
Reactivity:	Human, Mouse
Applications:	WB, IHC, ELISA
Isotype:	IgG
MW:	75kD (Observed)

Recommended Dilution Ratios

IHC:	1:50-300
WB:	1:500-2000
ELISA:	1:2000: 20000

Storage

-15°C to -25°C/1 year (Do not lower than -25°C)

Basic Information

Clonality	Polyclonal
-----------	------------

Immunogen Information

Specificity	This antibody detects endogenous levels of Human Mouse SLP-76 (phospho-Ser376)
-------------	--

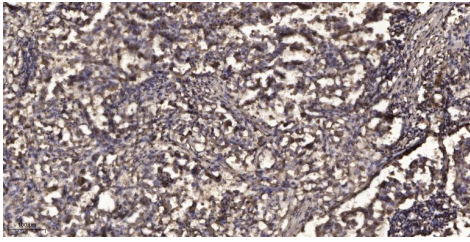
Target Information

Gene name	LCP2
Protein Name	SLP-76 (Ser376)

Organism	Gene ID	UniProt ID
Human	3937	Q13094
Mouse	16822	Q60787

Cellular Localization	Cytoplasm
Tissue specificity	Highly expressed in spleen, thymus and peripheral blood leukocytes. Highly expressed also in T-cell and monocytic cell lines, expressed at lower level in B-cell lines. Not detected in fibroblast or neuroblastoma cell lines.

Validation Data



Immunohistochemical analysis of paraffin-embedded human Squamous cell carcinoma of lung. 1, Antibody was diluted at 1:200(4° overnight). 2, Tris EDTA,pH9.0 was used for antigen retrieval. 3,Secondary antibody was diluted at 1:200(room temperature, 45min).

For Research Use Only