

Collagen Type I A1 Mouse mAb (AM10002)

Key Features

Host Species:	Mouse
Reactivity:	Human,Mouse,Rat
Applications:	IHC, WB, IF, ELISA
Isotype:	IgG2b,Kappa
MW:	125kD,105kD (Observed)

Recommended Dilution Ratios

IHC:	1:200-1000
WB:	1:500-2000
IF:	1:100-500
ELISA	1:1000-5000

Storage

-15°C to -25°C/1 year (Do not lower than -25°C)

Basic Information

Clonality	Monoclonal
-----------	------------

Immunogen Information

Specificity	The antibody can specifically recognize human Collagen Type I alpha 1 protein, can not recognize Collagen Type I alpha 2, collagen types II, III, IV and V do not respond to the antibody.
-------------	--

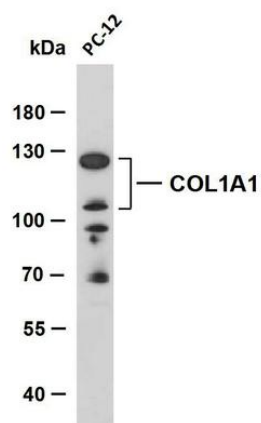
Target Information

Gene name	COL1A1
Protein Name	Collagen I α1 (Cleaved-Ala1218)

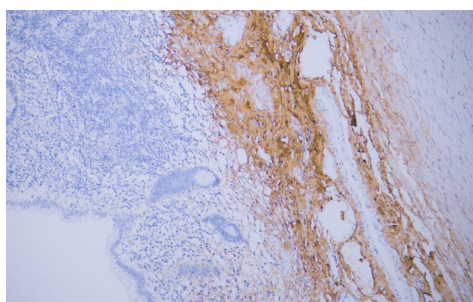
Organism	Gene ID	UniProt ID
Human	1277	P02452
Mouse	12842	P11087
Rat	29393	P02454

Cellular Localization	Secreted, extracellular space, extracellular matrix .
Tissue specificity	Forms the fibrils of tendon, ligaments and bones. In bones the fibrils are mineralized with calcium hydroxyapatite.

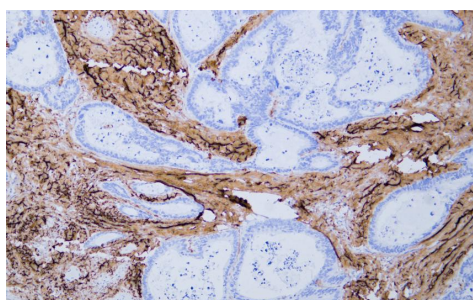
Validation Data



PC-12 whole cell lysates were separated by 8% SDS-PAGE, and the membrane was blotted with anti-Collagen alpha-1(I) chain antibody. The HRP-conjugated Goat anti-Mouse IgG(H + L) antibody was used to detect the antibody. Lane 1: PC-12



Human appendix tissue was stained with Anti-Collagen Type I Antibody



Human colon carcinoma tissue was stained with Anti-Collagen Type I Antibody

For Research Use Only