

TRPM2 rabbit pAb(AR20020)

Key Features

Host Species:	Rabbit
Reactivity:	Human, Mouse
Applications:	WB
Isotype:	IgG
MW:	165kD (Calculated)

Recommended Dilution Ratios

WB:	1:500-2000
-----	------------

Storage

-15°C to -25°C/1 year (Do not lower than -25°C)

Basic Information

Clonality	Polyclonal
-----------	------------

Immunogen Information

Specificity	This antibody detects endogenous levels of TRPM2 at Human/Mouse
-------------	---

Target Information

Gene name	TRPM2 EREG1 KNP3 LTRPC2 TRPC7
Protein Name	TRPM2

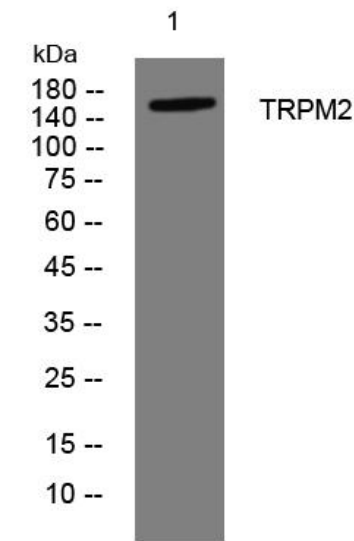
Organism	Gene ID	UniProt ID
Human	7226	O94759
Mouse		Q91YD4

Cellular Localization	Cell membrane ; Multi-pass membrane protein . Perikaryon . Cell projection . Cytoplasmic vesicle . Lysosome . Detected at the cell membrane and in intracellular vesicles in cortical neurons. Detected on neuronal cell bodies and neurites (By similarity). Detected on the cell membrane in polymorphonuclear neutrophils. Detected on cytoplasmic vesicles and lysosomes in immature bone marrow dendritic cells (By similarity). .; [Isoform 1]: Cell membrane ; Multi-pass membrane protein .; [Isoform 2]: Cell membrane ; Multi-pass membrane protein .; [Isoform 3]: Cell membrane ; Multi-pass membrane protein .
-----------------------	---

Tissue specificity

Highly expressed in brain and peripheral blood cells, such as neutrophils. Also detected in bone marrow, spleen, heart, liver and lung. Isoform 2 is found in neutrophil granulocytes.

Validation Data



Western blot analysis of lysates from A431 cells, primary antibody was diluted at 1:1000, 4°over night

For Research Use Only