

Smad2/3 Rabbit pAb(AR20026)

Key Features

Host Species:	Rabbit
Reactivity:	Human, Mouse, Rat, Monkey, Pig
Applications:	WB, IHC, IF, ELISA
Isotype:	IgG
MW:	48kD (Observed)

Recommended Dilution Ratios

WB:	1:500-2000
IHC:	1:100-300
IF	1:50-200
ELISA:	1:10000

Storage

-15°C to -25°C/1 year (Do not lower than -25°C)

Basic Information

Clonality	Polyclonal
-----------	------------

Immunogen Information

Specificity	Smad2/3 Polyclonal Antibody detects endogenous levels of Smad2/3 protein.
-------------	---

Target Information

Gene name	SMAD2/SMAD3
Protein Name	Mothers against decapentaplegic homolog 2/3

Organism	Gene ID	UniProt ID
Human	4087; 4088	Q15796; P84022
Mouse	17126; 17127	
Rat	29357; 25631	070436; P84025

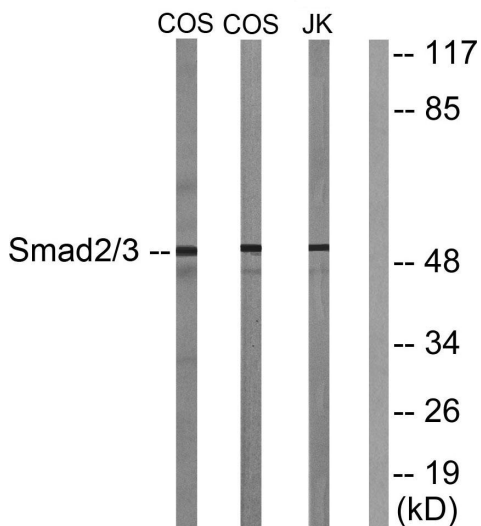
Cellular Localization	Cytoplasm . Nucleus . Cytoplasmic and nuclear in the absence of TGF-beta. On TGF-beta stimulation, migrates to the nucleus when complexed with SMAD4 (PubMed:9865696, PubMed:21145499). On dephosphorylation by phosphatase PPM1A, released from the SMAD2/SMAD4 complex, and exported out of the nucleus by
-----------------------	--

interaction with RANBP1 (PubMed:16751101, PubMed:19289081). Localized mainly to the nucleus in the early stages of embryo development with expression becoming evident in the cytoplasm at the blastocyst and epiblast stages (By similarity). .

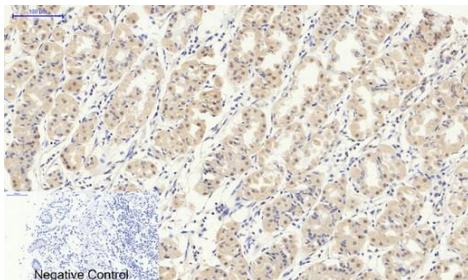
Tissue specificity

Expressed at high levels in skeletal muscle, endothelial cells, heart and placenta.

Validation Data



Western blot analysis of lysates from COS7 and Jurkat cells, treated with UV 15', using Smad2/3 Antibody. The lane on the right is blocked with the synthesized peptide.



Immunohistochemical analysis of paraffin-embedded Human-stomach tissue. 1,Smad2/3 Polyclonal Antibody was diluted at 1:200(4 ° C,overnight). 2, Sodium citrate pH 6.0 was used for antibody retrieval(>98°C,20min). 3,Secondary antibody was diluted at 1:200(room tempeRature, 30min). Negative control was used by secondary antibody only.

For Research Use Only