

## HIPK4 Rabbit pAb (AR20011)

### Key Features

Host Species:	Rabbit
Reactivity:	Human, Mouse, Rat
Applications:	WB, IHC, IF, ELISA
Isotype:	IgG
MW:	69kD (Calculated) 80kD (Observed)

### Recommended Dilution Ratios

IHC:	1:100-300
WB:	1:500-2000
IF:	1:200-1000
ELISA:	1: 20000

### Storage

-15°C to -25°C/1 year (Do not lower than -25°C)

### Basic Information

Clonality	Polyclonal
-----------	------------

### Immunogen Information

Specificity	HIPK4 Polyclonal Antibody detects endogenous levels of HIPK4 protein
-------------	--

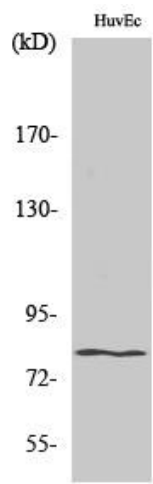
### Target Information

Gene name	HIPK4
Protein Name	Homeodomain-interacting protein kinase 4

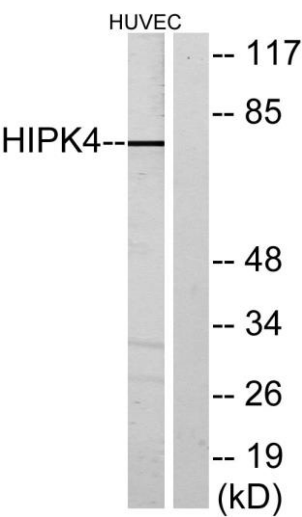
Organism	Gene ID	UniProt ID
Human	147746	Q8NE63
Mouse	233020	Q3V016
Rat	308449	Q4V793

Cellular Localization	Cytoplasm
Tissue specificity	Testis

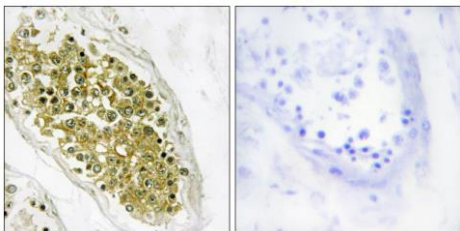
Validation Data



Western Blot analysis of various cells using HIPK4 Polyclonal Antibody



Western blot analysis of lysates from HUVEC cells, using HIPK4 Antibody. The lane on the right is blocked with the synthesized peptide.



Immunohistochemistry analysis of paraffin-embedded human testis tissue, using HIPK4 Antibody. The picture on the right is blocked with the synthesized peptide.

For Research Use Only