

## ATP6 Rabbit pAb (AR20038)

### Key Features

Host Species:	Rabbit
Reactivity:	Human,Rat
Applications:	WB,ELISA
Isotype:	IgG
MW:	25KD (Calculated) 25KD (Observed)

### Recommended Dilution Ratios

WB:	1:500-2000
ELISA:	1:5000-20000

### Storage

-15°C to -25°C/1 year (Do not lower than -25°C)

### Basic Information

Clonality	Polyclonal
-----------	------------

### Immunogen Information

Specificity	ATP6 Polyclonal Antibody detects endogenous levels of protein.
-------------	--

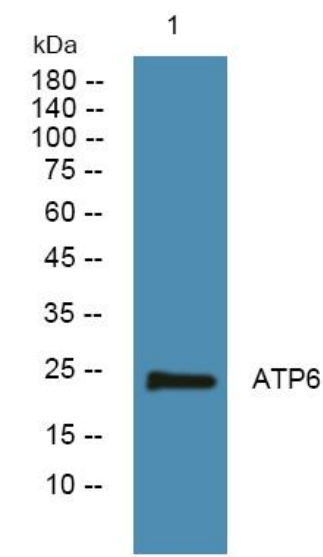
### Target Information

Gene name	MT-ATP6 ATP6 ATPASE6 MTATP6
Protein Name	ATP synthase subunit a (F-ATPase protein 6)

Organism	Gene ID	UniProt ID
Human	4508	P00846
Mouse		P00848
Rat		P05504

Cellular Localization	Mitochondrion inner membrane; Multi-pass membrane protein.
Tissue specificity	Blood, Bone fossil, Bones, Breast cancer, Distant normal tissue, Endometrial adenocarcin.

Validation Data



Western blot analysis of lysates from SW480 cells, primary antibody was diluted at 1:1000, 4°C overnight.

For Research Use Only