

Annexin A1 (ABT-ANXA1) Mouse mAb (AM10007)

Key Features

Host Species:	Mouse
Reactivity:	Human,Mouse,Rat
Applications:	IHC,WB,IF,ELISA
Isotype:	IgG1,Kappa
	39kD (Calculated)
MW:	37kD (Observed)

Recommended Dilution Ratios

IHC:	1:200-1000
WB:	1:500-2000
IF:	1:100-500
ELISA	1:1000-5000

Storage

-15°C to -25°C/1 year (Do not lower than -25°C)

Basic Information

Clonality	Monoclonal
-----------	------------

Immunogen Information

Specificity	This antibody detects endogenous levels of Annexin A1 protein
-------------	---

Target Information

Gene name	ANXA1 ANX1 LPC1
-----------	-----------------

Protein Name	Annexin A1 (Annexin I) (Annexin-1) (Calpactin II) (Calpactin-2) (Chromobindin-9) (Lipocortin I) (Phospholipase A2 inhibitory protein) (p35)
--------------	---

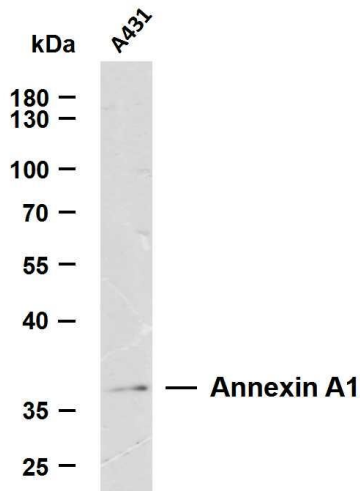
Organism	Gene ID	UniProt ID
Human	301	P04083

Cellular Localization	Cytoplasmic, Nuclear
-----------------------	----------------------

Tissue specificity	Detected in resting neutrophils (PubMed:10772777). Detected in peripheral blood T-cells (PubMed:17008549). Detected in extracellular vesicles in blood serum from patients with inflammatory bowel disease, but not in serum from healthy donors
--------------------	--

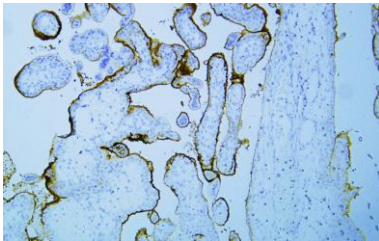
(PubMed:25664854). Detected in placenta (at protein level)
(PubMed:2532504). Detected in liver.

Validation Data

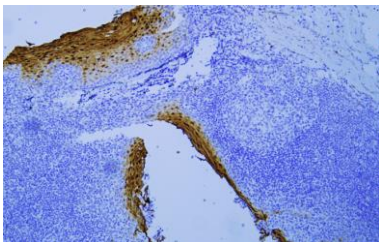


Whole cell lysates were separated by 10% SDS-PAGE, and the membrane was blotted with anti-Annexin A1 (ABT-ANXA1) antibody. The HRP-conjugated Goat anti-Mouse IgG(H + L) antibody was used to detect the antibody.

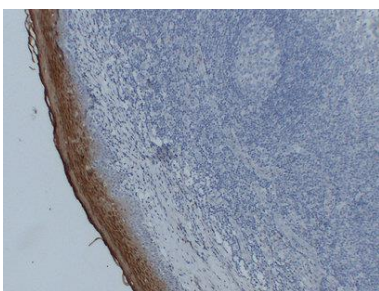
Lane 1: A431



Human placenta tissue was stained with Anti-Annexin A1 (ABT-ANXA1) Antibody



Human tonsil tissue was stained with Anti-Annexin A1 (ABT-ANXA1) Antibody



Immunohistochemical analysis of paraffin-embedded Tonsil.

1. Antibody was diluted at 1:200 (4°C overnight).
2. Tris-EDTA, pH8.0 was used for antigen retrieval.
3. Secondary antibody was diluted at 1:200(room temperature, 30min).

For Research Use Only