

## Collagen I Rabbit pAb(AR20041)

### Key Features

Host Species:	Rabbit
Reactivity:	Human, Mouse, Rat
Applications:	WB,ELISA
Isotype:	IgG
MW:	115kD (Observed)

### Recommended Dilution Ratios

WB:	1:500-2000
ELISA:	1:10000-20000

### Storage

-15°C to -25°C/1 year (Do not lower than -25°C)

### Basic Information

Clonality	Polyclonal
-----------	------------

### Immunogen Information

Specificity	This antibody detects endogenous levels of Collagen I.
-------------	--

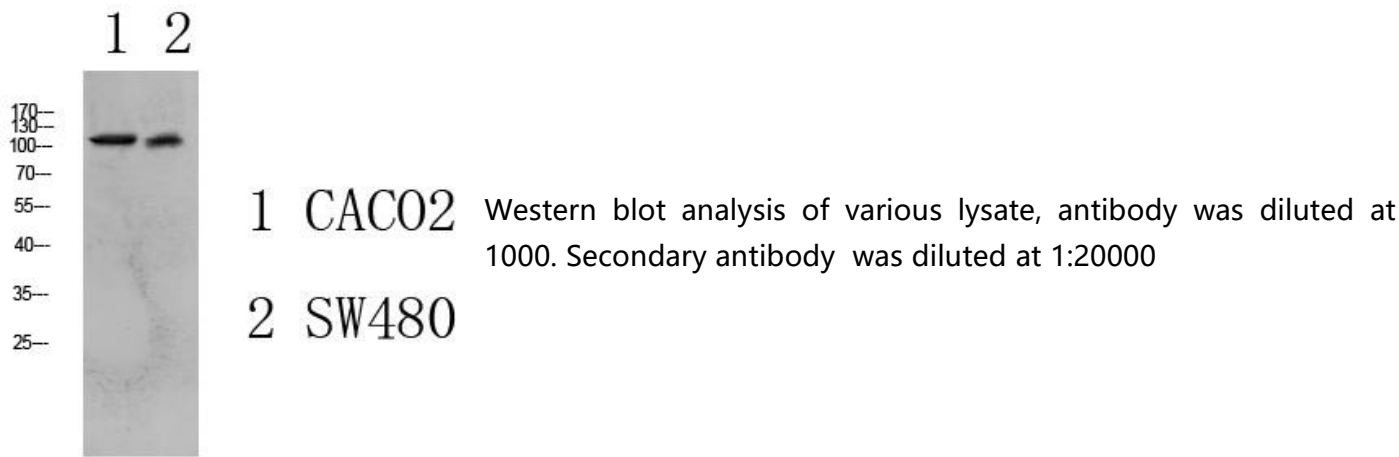
### Target Information

Gene name	COL1A2
Protein Name	Collagen alpha-2(I) chain (Alpha-2 type I collagen)

Organism	Gene ID	UniProt ID
Human	1278	P08123
Mouse	12843	Q01149
Rat	84352	P02466

Cellular Localization	Secreted, extracellular space, extracellular matrix .
Tissue specificity	Forms the fibrils of tendon, ligaments and bones. In bones the fibrils are mineralized with calcium hydroxyapatite.

Validation Data



For Research Use Only