

Cytokeratin 5 (ABT-CK5) Mouse mAb (AM10008)

Key Features

Host Species:	Mouse
Reactivity:	Human, Dog
Applications:	IHC, ELISA
Isotype:	IgG2a,Kappa
MW:	62kD (Calculated) 62kD (Observed)

Recommended Dilution Ratios

IHC:	1:200-400
ELISA	1:500-5000

Storage

-15°C to -25°C/1 year (Do not lower than -25°C)

Basic Information

Clonality	Monoclonal
-----------	------------

Immunogen Information

Specificity	The antibody can specifically recognize human CK5 protein, and shows no cross reaction with CK6.
-------------	--

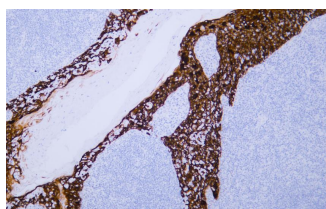
Target Information

Gene name	KRT5
Protein Name	Keratin, type II cytoskeletal 5 (58 kDa cytokeratin) (Cytokeratin-5) (CK-5) (Keratin-5) (K5) (Type-II keratin Kb5)

Organism	Gene ID	UniProt ID
Human	3852	P13647

Cellular Localization	Cytoplasmic, Membranous
Tissue specificity	Expressed in corneal epithelium (at protein level).

Validation Data



Human tonsil tissue was stained with Anti-Cytokeratin 5 (ABT-CK5) Antibody

For Research Use Only