

PKM Rabbit mAb (AR1023)

Key Features

Host Species:	Rabbit
Reactivity:	Human, Mouse, Rat
Applications:	WB, IHC, IF, IP, ELISA
Isotype:	IgG, Kappa
MW:	58kD (Calculated) 58kD (Observed)

Recommended Dilution Ratios

IHC:	1:200-1000
WB:	1:1000-5000
IF:	1:200-1000
ELISA:	1:5000-20000
IP:	1:50-200

Storage

-15°C to -25°C/1 year (Do not lower than -25°C)

Basic Information

Clonality	Monoclonal
-----------	------------

Immunogen Information

Specificity	Endogenous
-------------	------------

Target Information

Gene name	PKM
Protein Name	Pyruvate kinase isozymes M1/M2

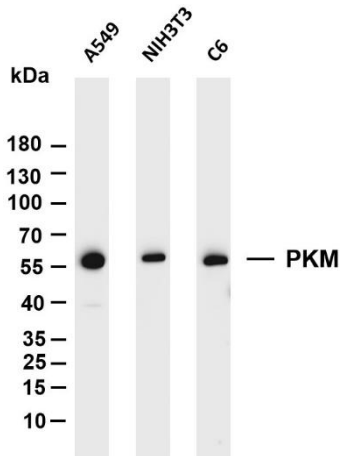
Organism	Gene ID	UniProt ID
Human	5315	P14618
Mouse	18746	P52480
Rat	25630	P11980

Cellular Localization	Cytoplasm
-----------------------	-----------

Tissue specificity	[Isoform M2]: Specifically expressed in proliferating cells, such as embryonic stem cells, embryonic carcinoma cells, as well as cancer
--------------------	---

cells; [Isoform M1]: Expressed in adult tissues (PubMed:18337823).
Not expressed in tumor cells (PubMed:18337823).

Validation Data



Various whole cell lysates were separated by 4-20% SDS-PAGE, and the membrane was blotted with anti-PKM antibody. The HRP conjugated Goat anti-Rabbit IgG(H + L) antibody was used to detect the antibody.

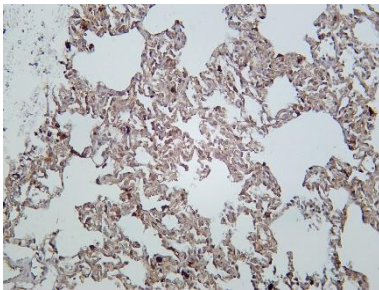
Lane 1: A549

Lane 2: NIH3T3

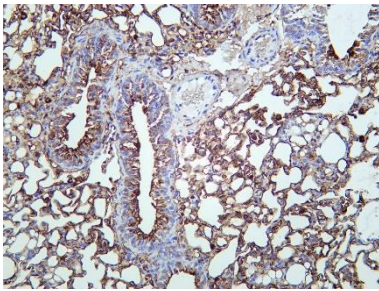
Lane 3: C6

Predicted band size: 58kDa

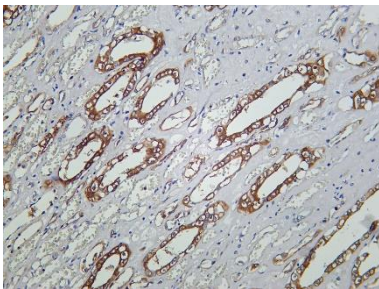
Observed band size: 58kDa



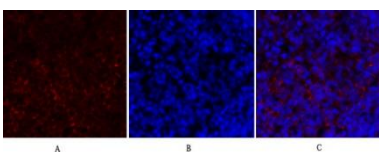
Rat lung was stained with Anti-PKM rabbit antibody



Mouse lung was stained with Anti-PKM rabbit antibody



Human kidney was stained with Anti-PKM rabbit antibody



Immunofluorescence analysis of rat-spleen tissue.

1. PKM2 Polyclonal Antibody(red) was diluted at 1:200 (4°C, overnight).
2. Cy3 labeled Secondary antibody was diluted at 1:300(room temperature, 50min).
3. DAPI (blue) 10min.

Picture A: Target. Picture B: DAPI. Picture C: merge of A+B

For Research Use Only